

# CHARGE-ASSOCIATION

Prof.Dr.med Klaus Richter

[www.pathologie-richter.de](http://www.pathologie-richter.de)

eMail: [richter@pathologie-richter.de](mailto:richter@pathologie-richter.de)

# CHARGE-ASSOCIATION

- C = Coloboma (80%)**
- H = Heart disease**
- A = Atresia choanae (58%)**
- R = Retarded growth or CNS anomalies (87-94%)**
- G = Genital anomalies or hypogonadism (75%)**
- E = Ear anomalies or deafness (88%)**

# CHARGE-ASSOCIATION

## Obduktionsbefunde

1. Sog. Vogelgesicht
2. Mikrognathie des Unterkiefers
3. Syndesmose des Ober- und Unterkiefers
4. Ohrdysplasie
5. Kolobom bds.
6. Komplexes Vitium cordis
7. Mesocolon ileocolicum commune
8. Megasygmoideum
9. Pankreasschwanzaplasie
10. Margo crenatus der Milz
11. Bauchhoden
12. Extremitätendysplasie



2003 10 1





2003 10 1



2003 10 1





2003 10 1





2003 10 1

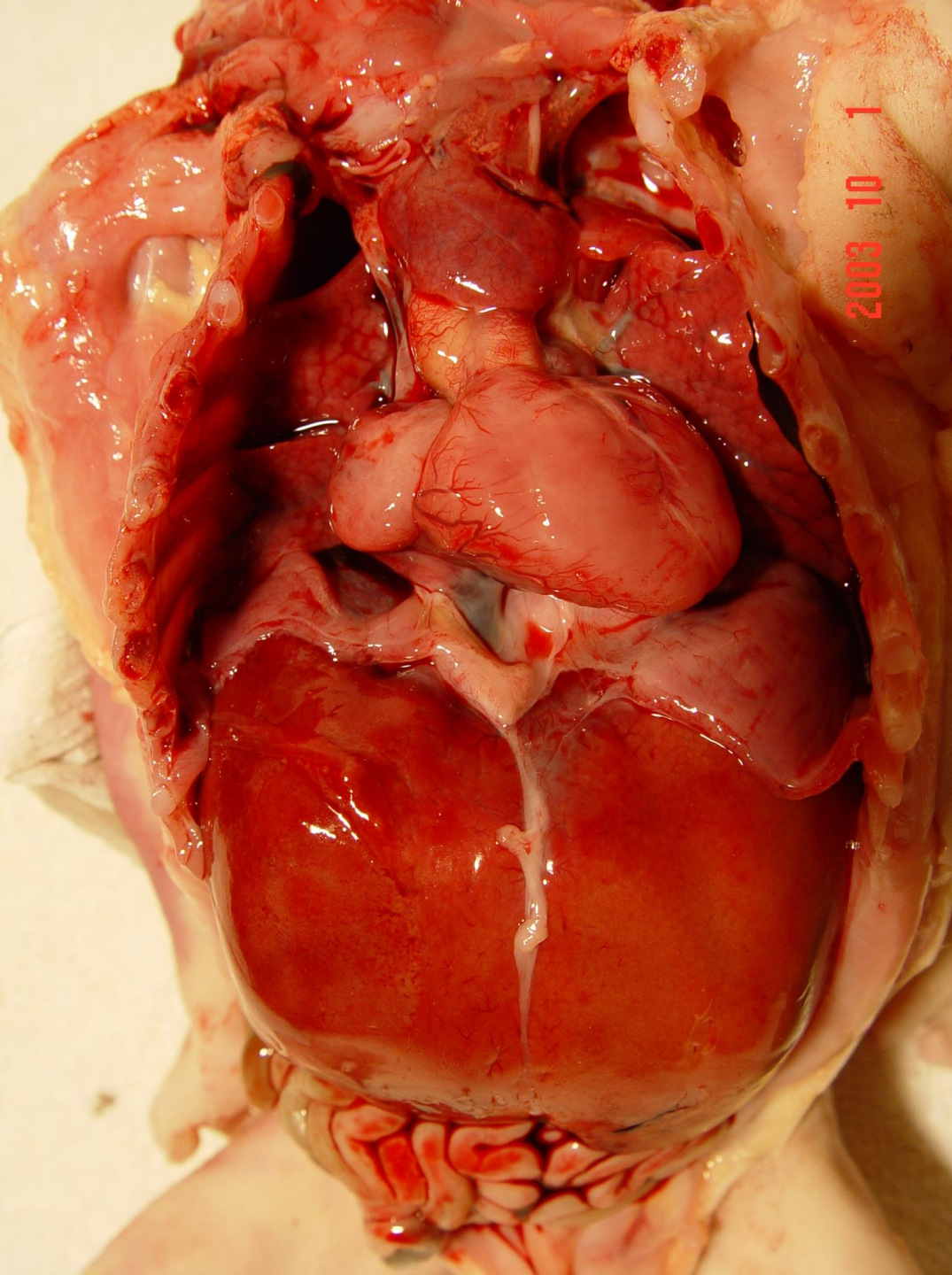




2003 10 1



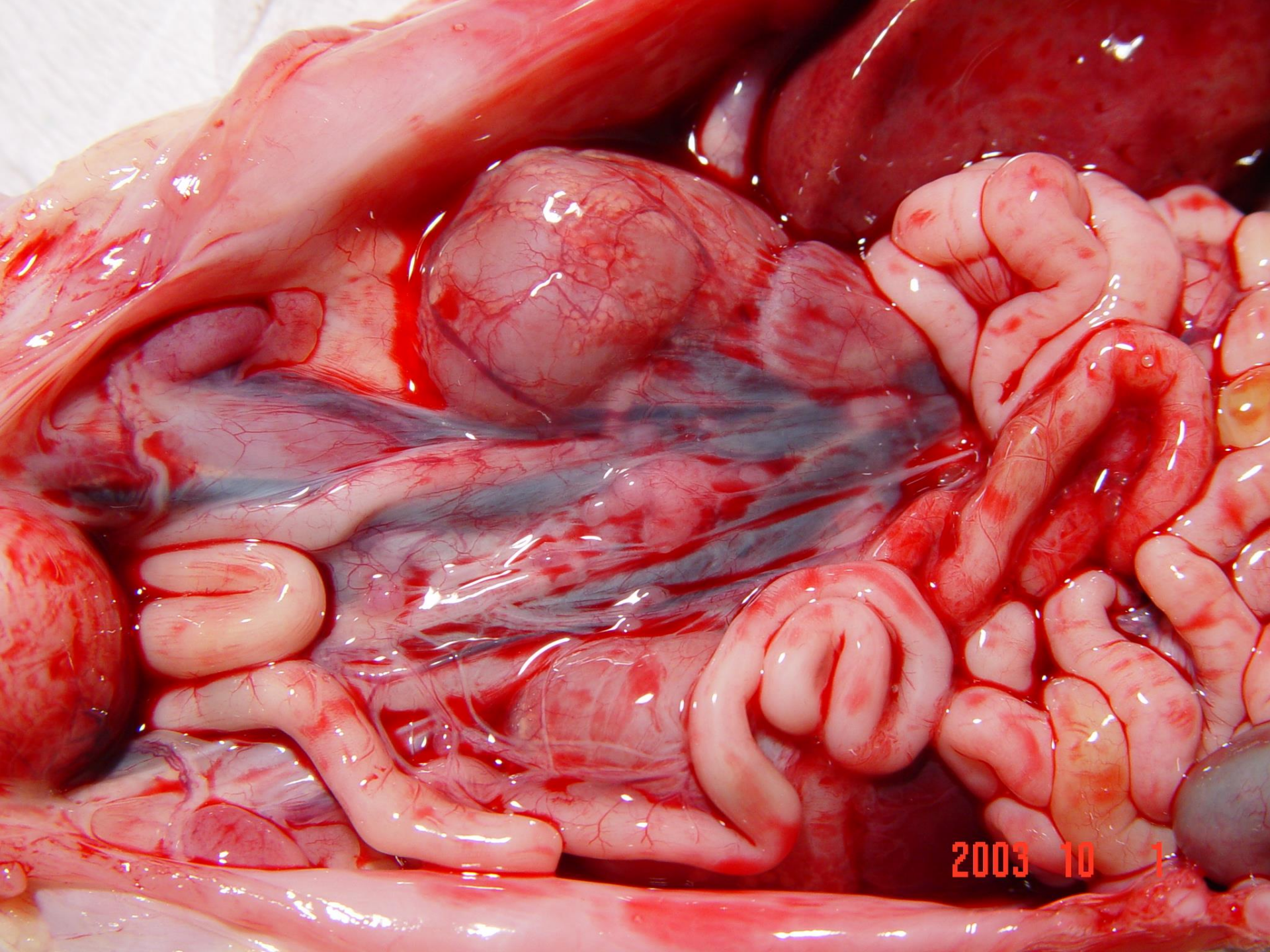




2003 10 1

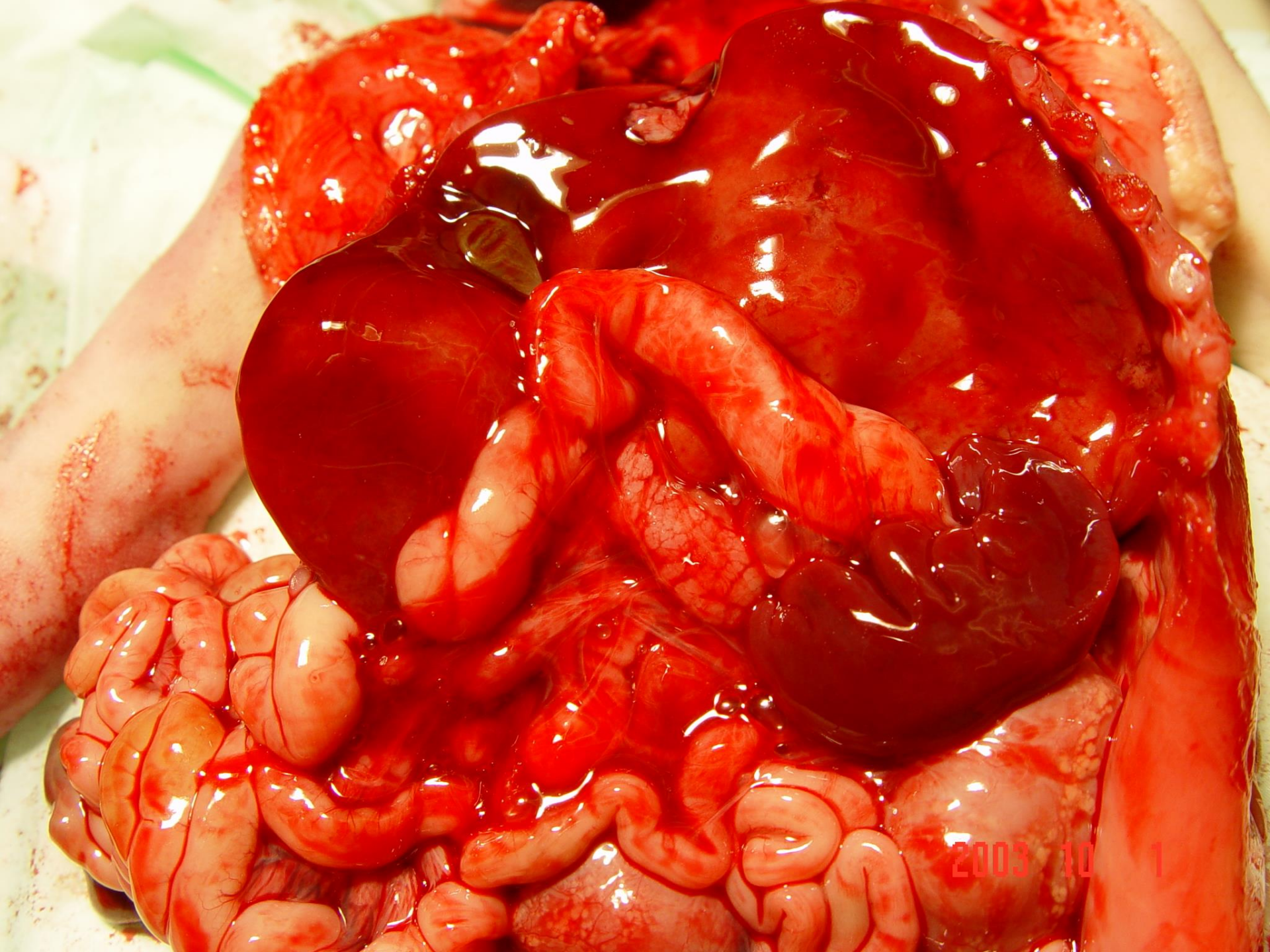
CHARGE- ASSOCIATION





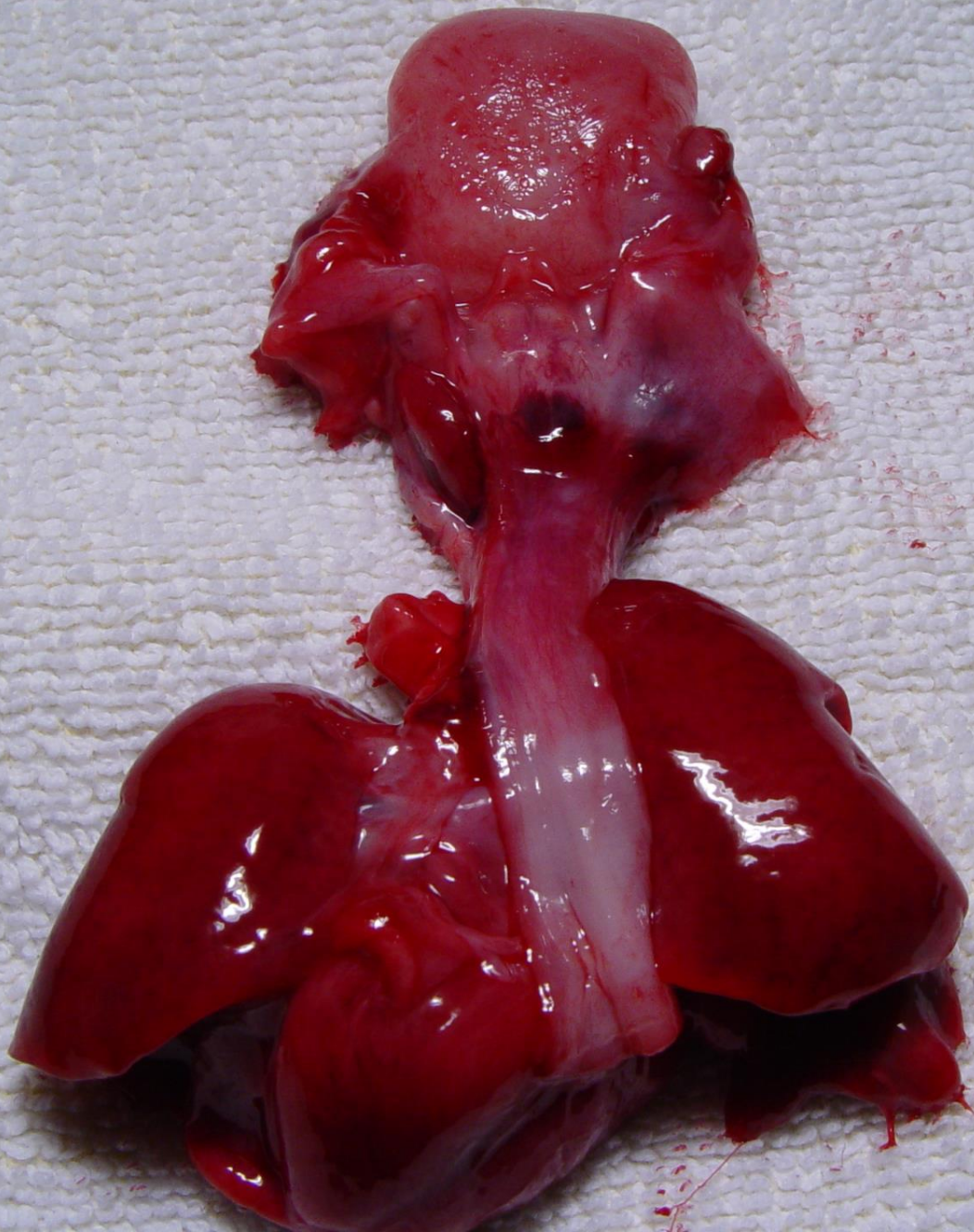
2003 10 1





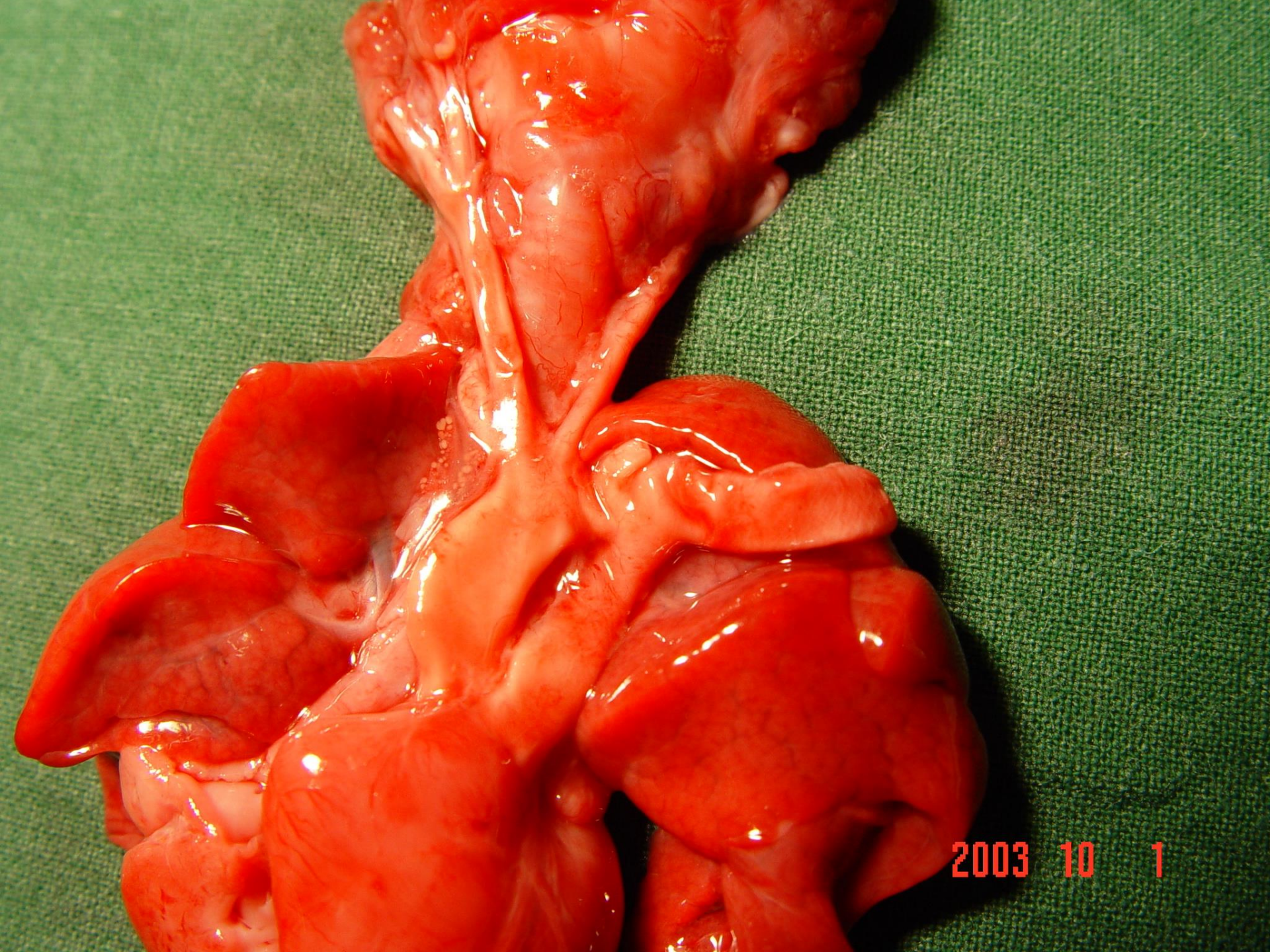
2003 10 1





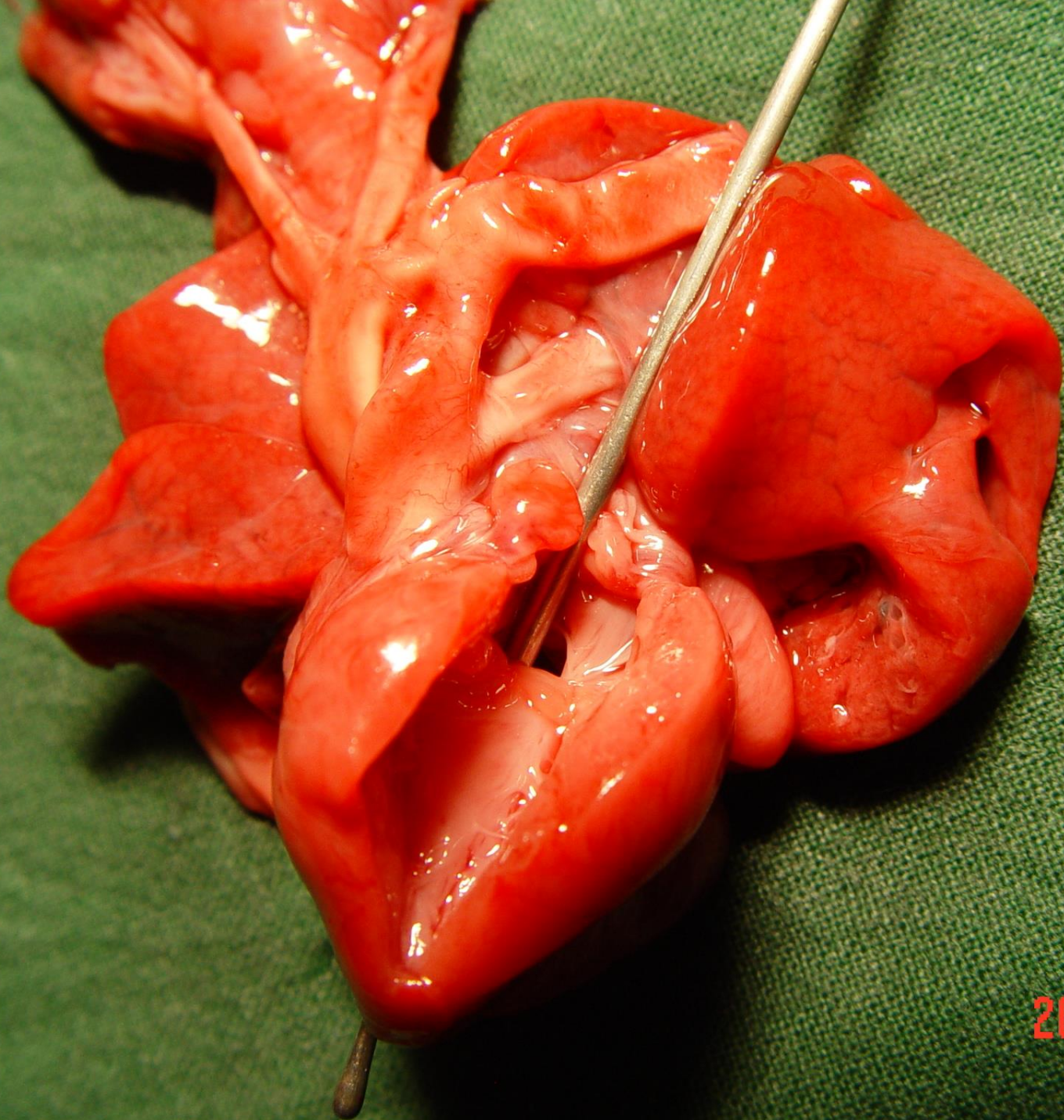
2003 10 1





2003 10 1





2003 10 1





2003 10 2