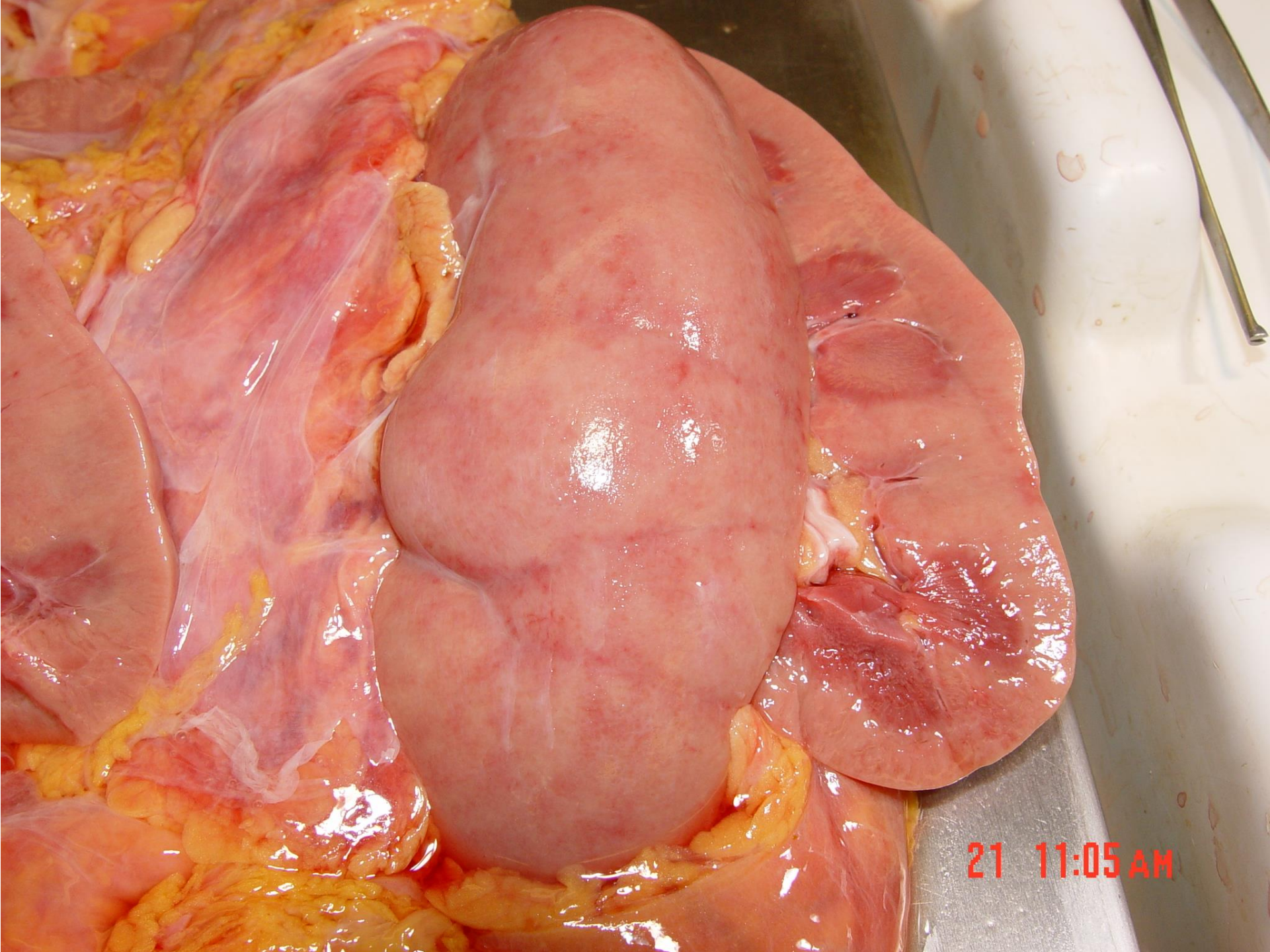


Diffuse membrano-proliferative Glomerulonephritis

Falldemonstration weiblich 51 Jahre alt

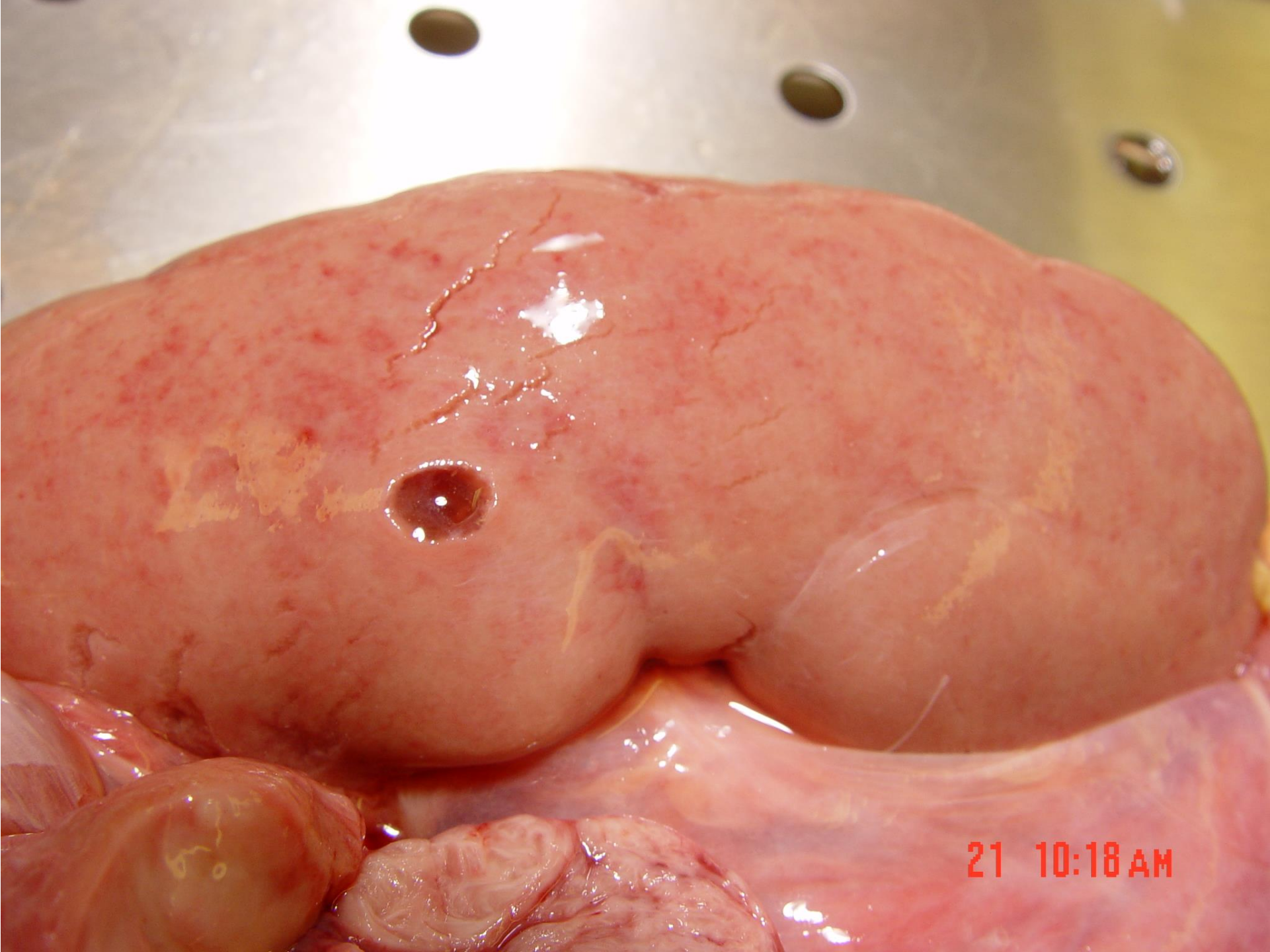
- Diffuse membrano-proliferative Glomerulonephritis
- Z.n. Pneumokokkenpneumonie und Sepsis
- Z.n. dialysepflichtiger Niereninsuffizienz
- Todesursache: irreversibler Schock bei cardio-pulmonaler Insuffizienz

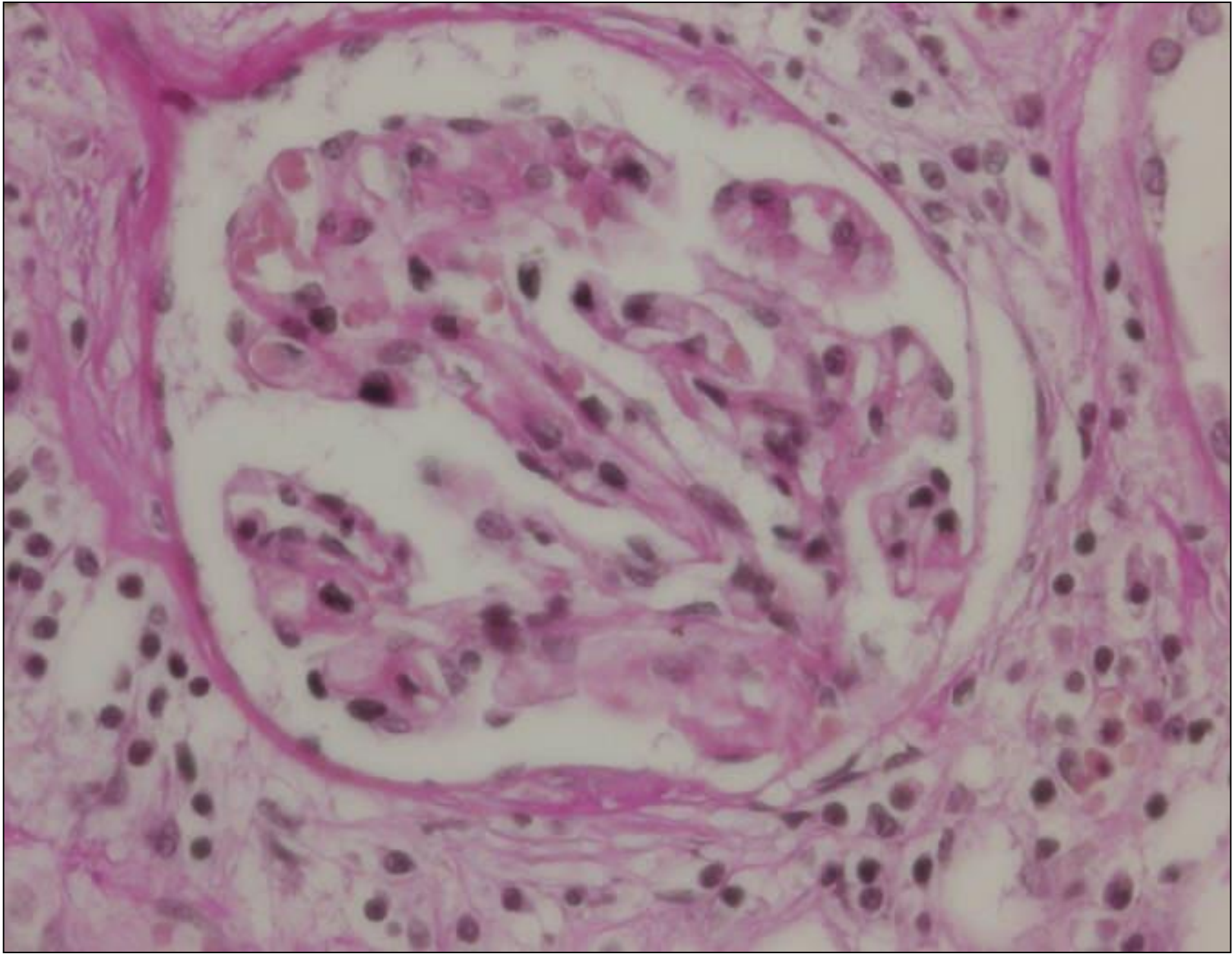


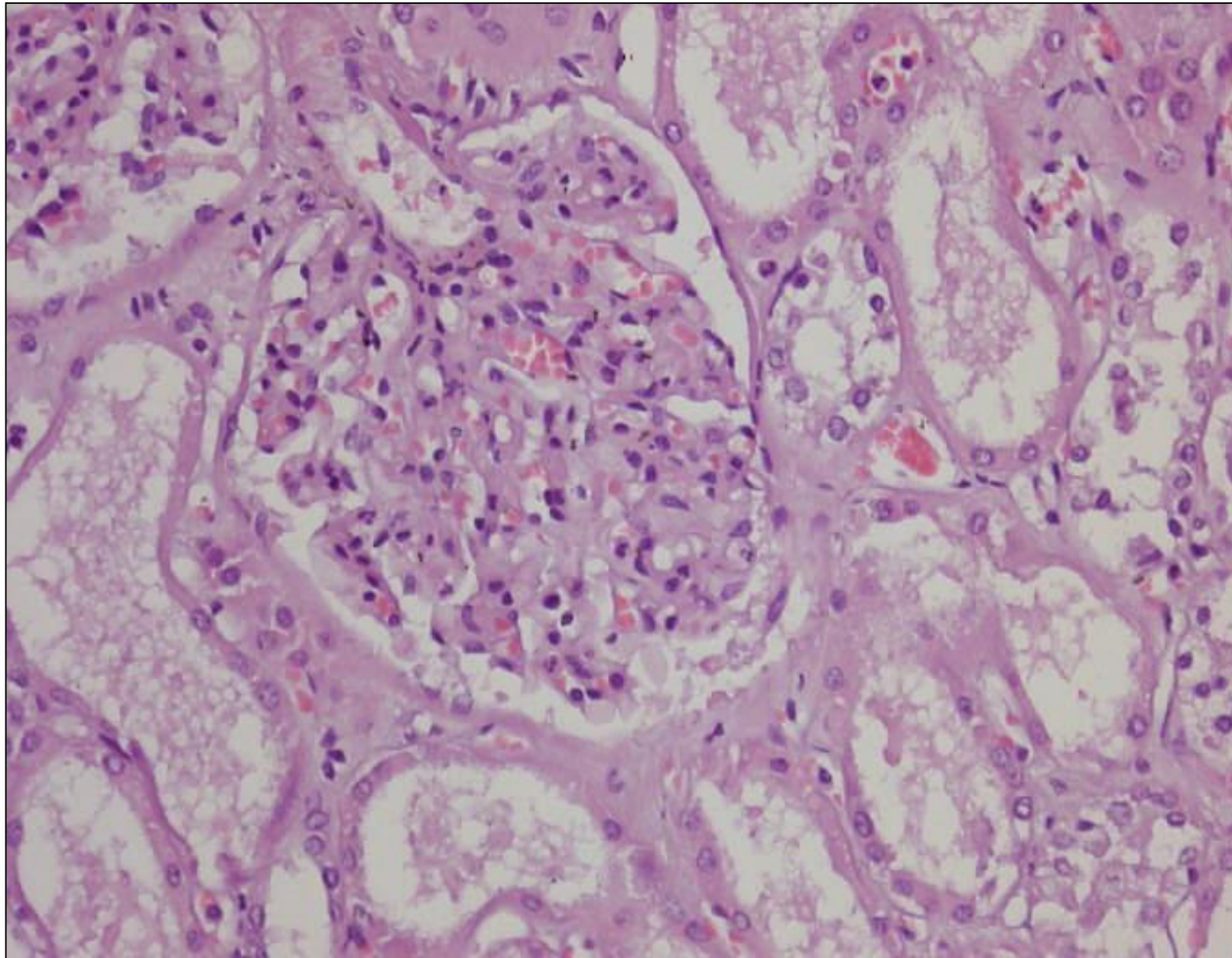
21 11:05 AM

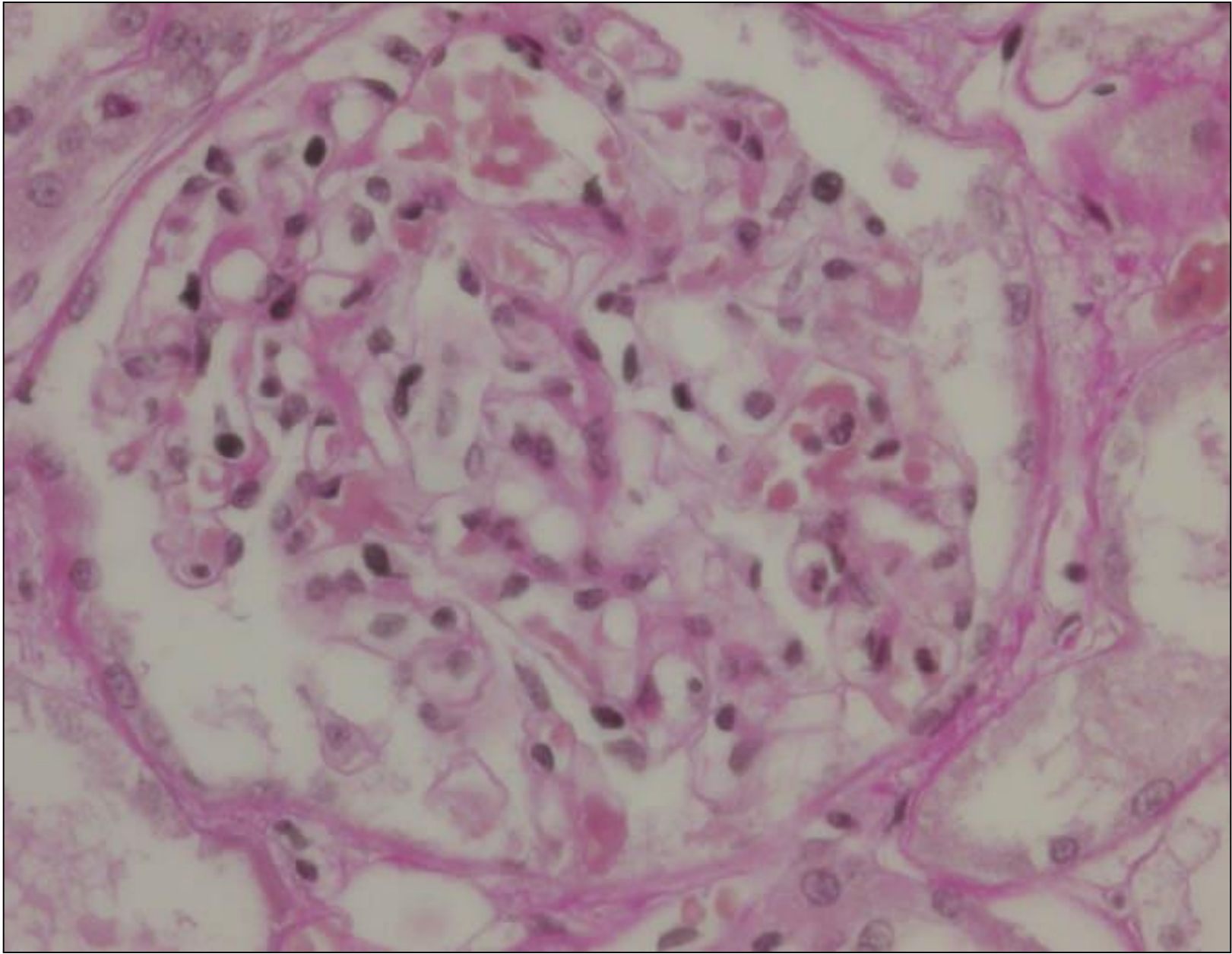


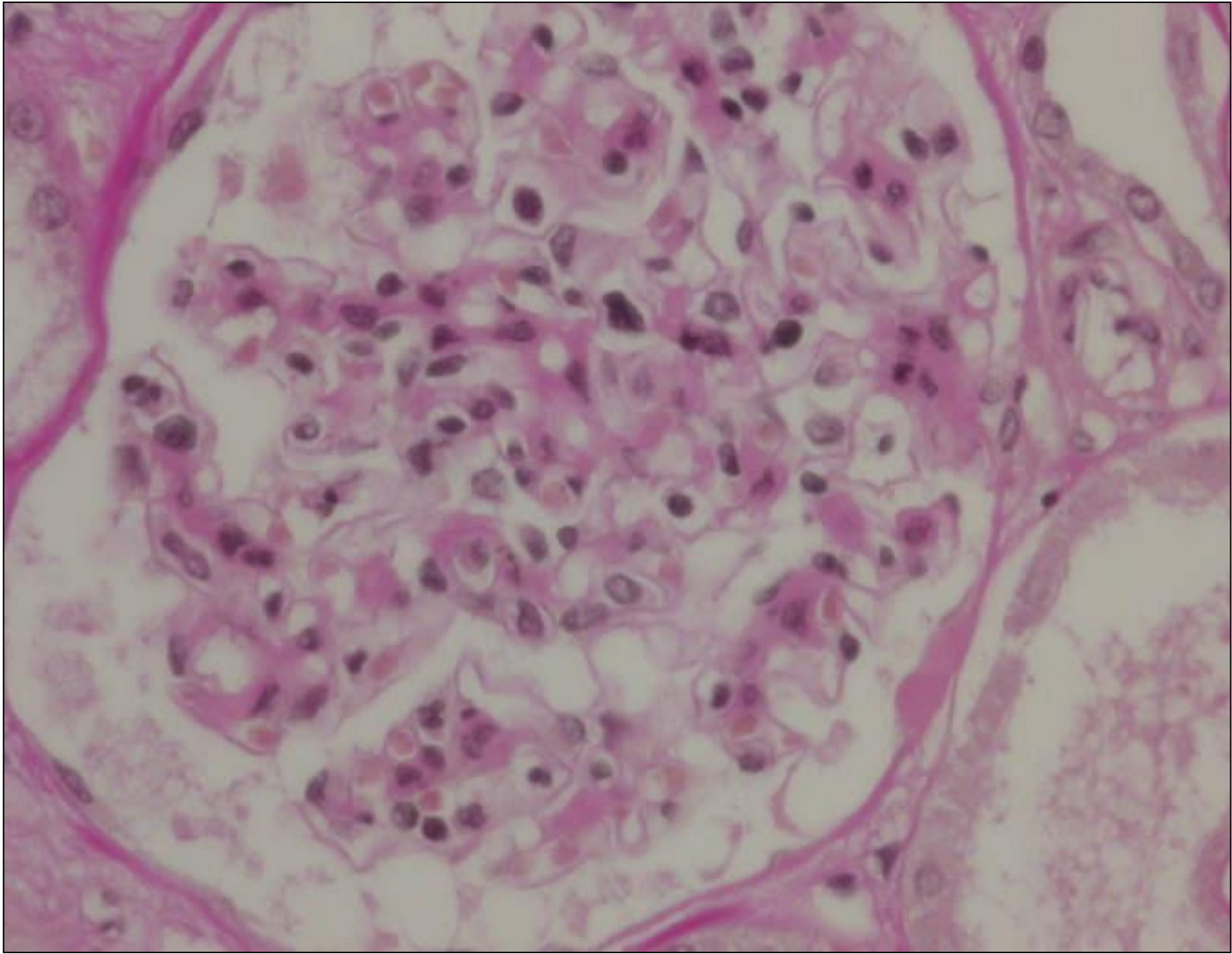
21 11:05 AM

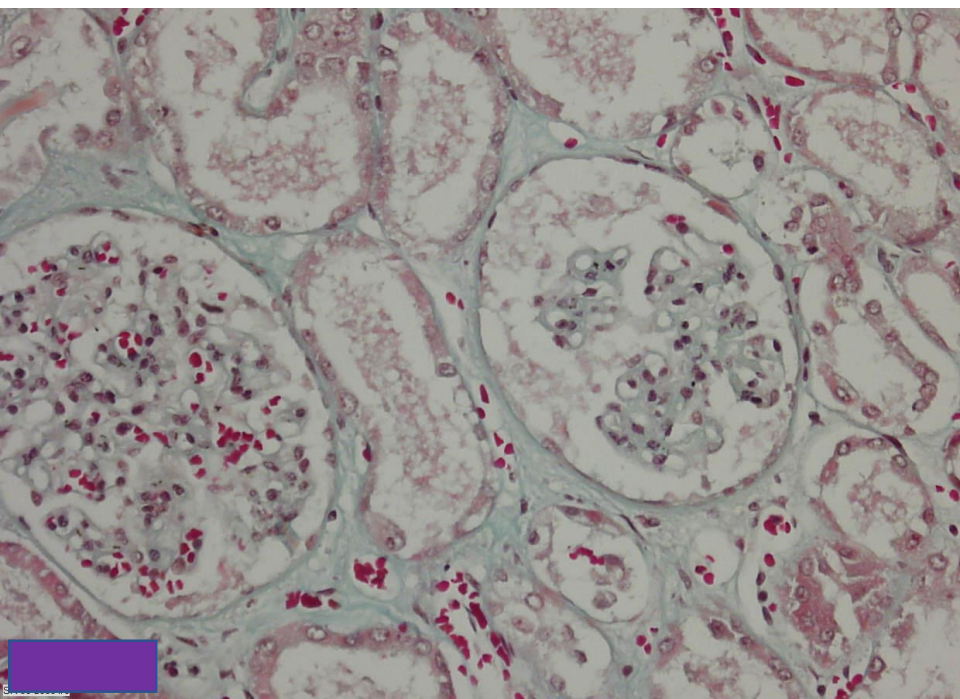
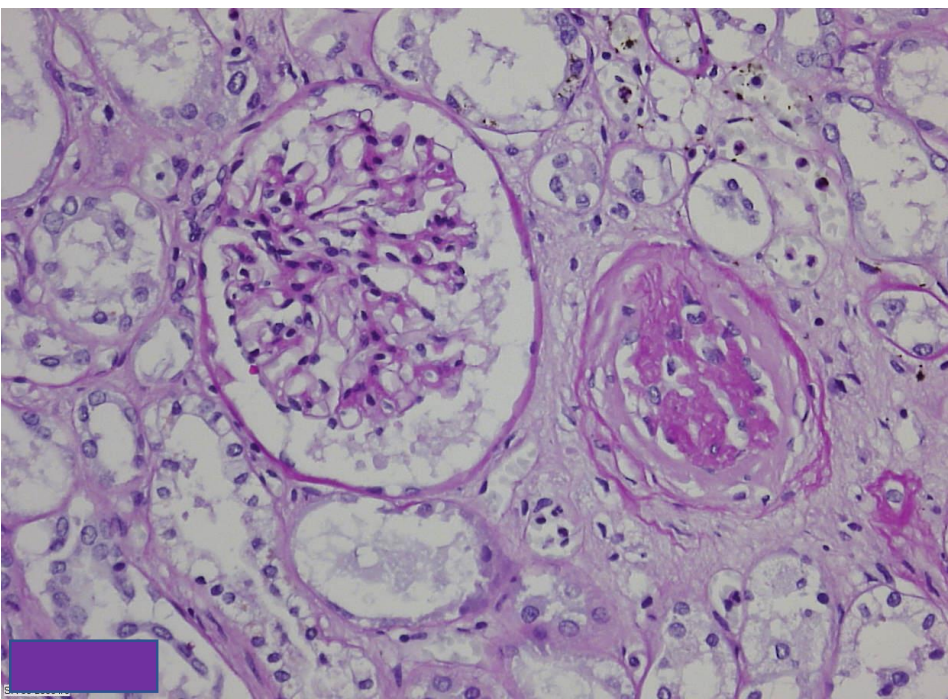
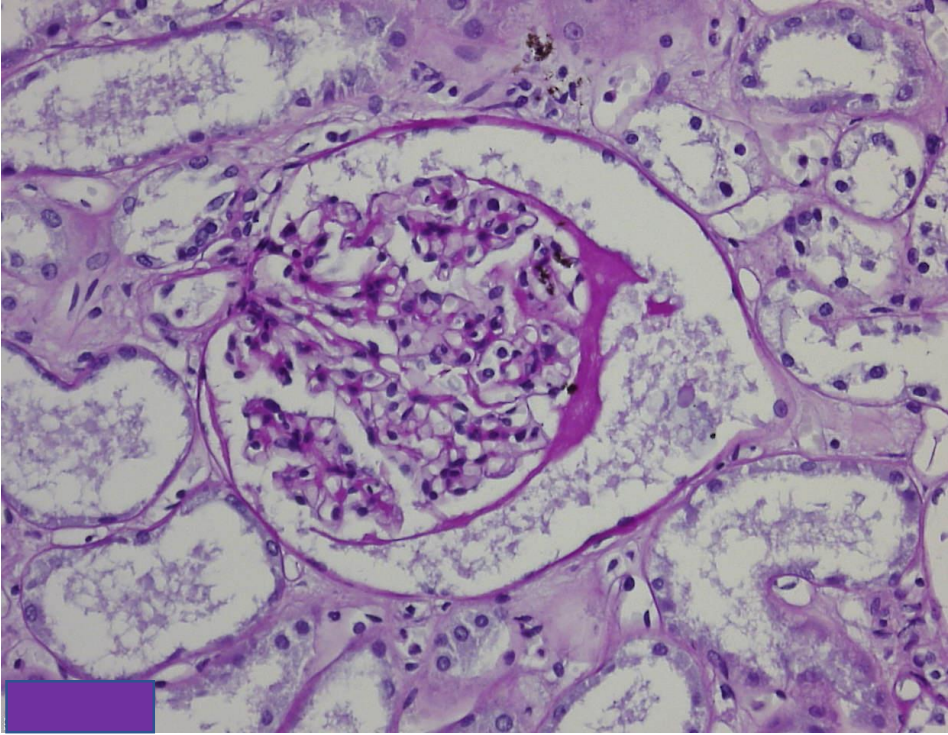
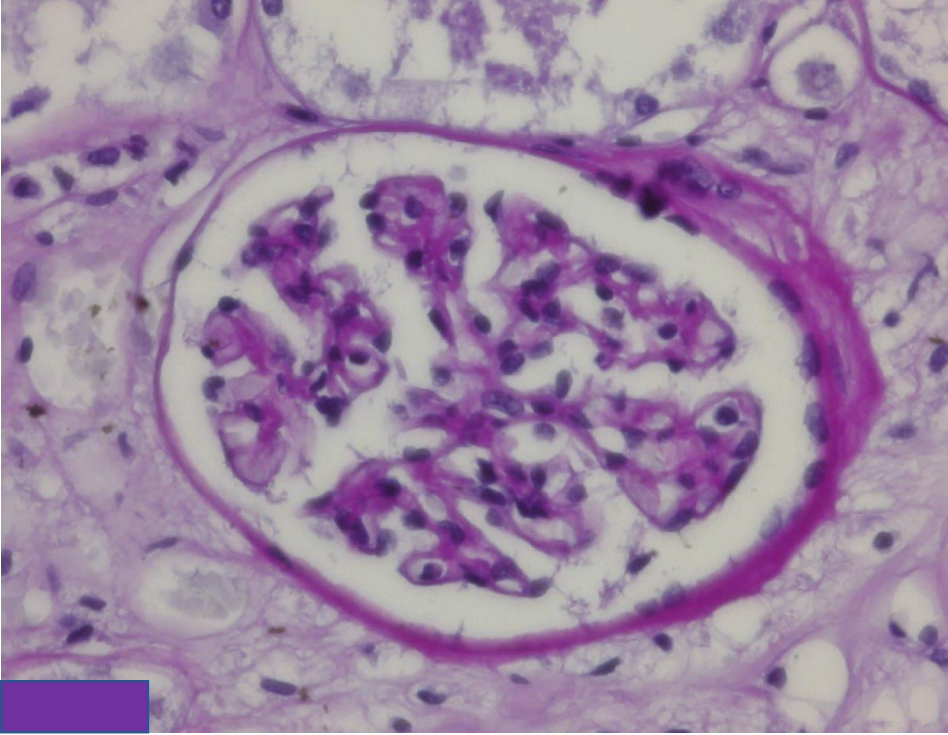


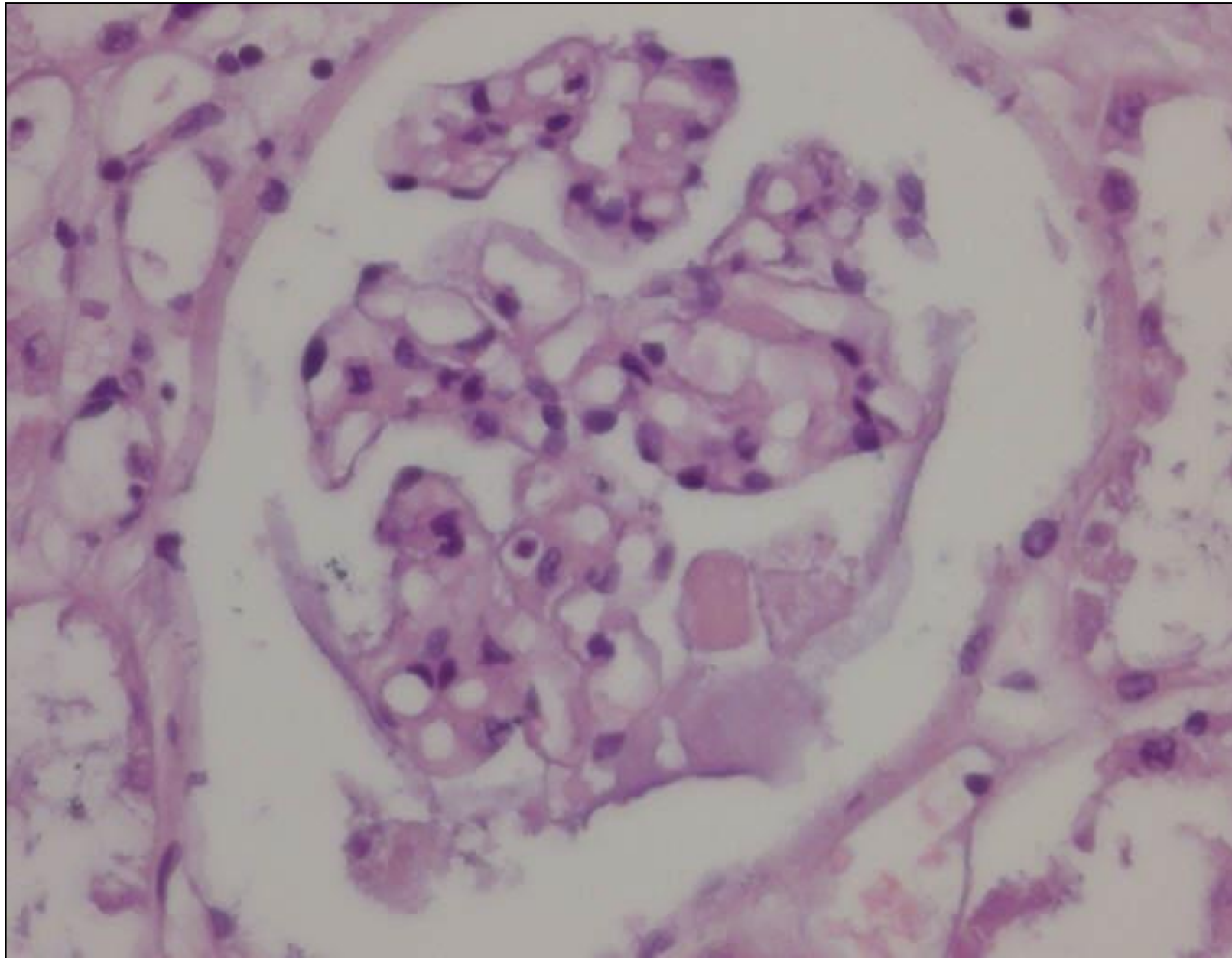


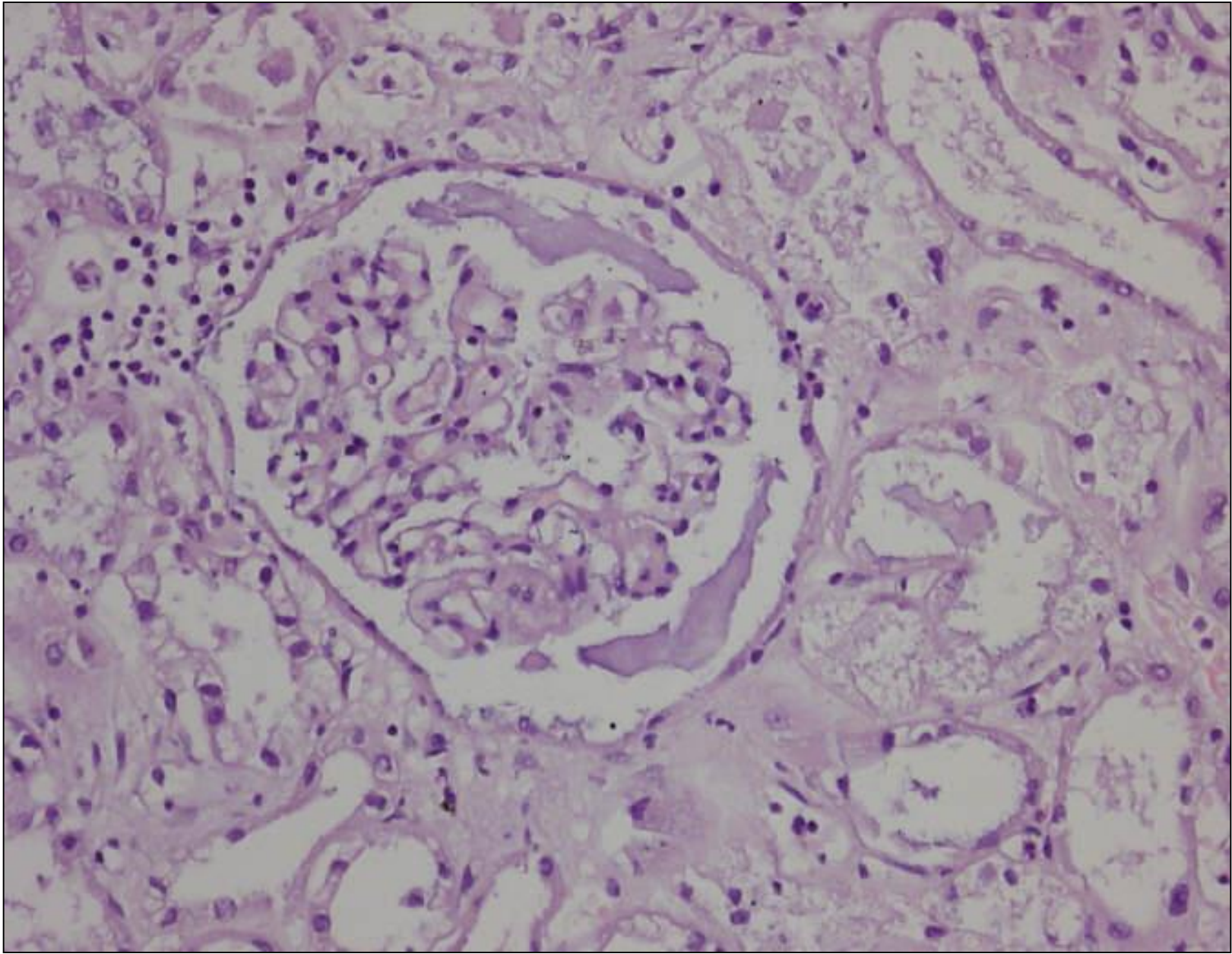


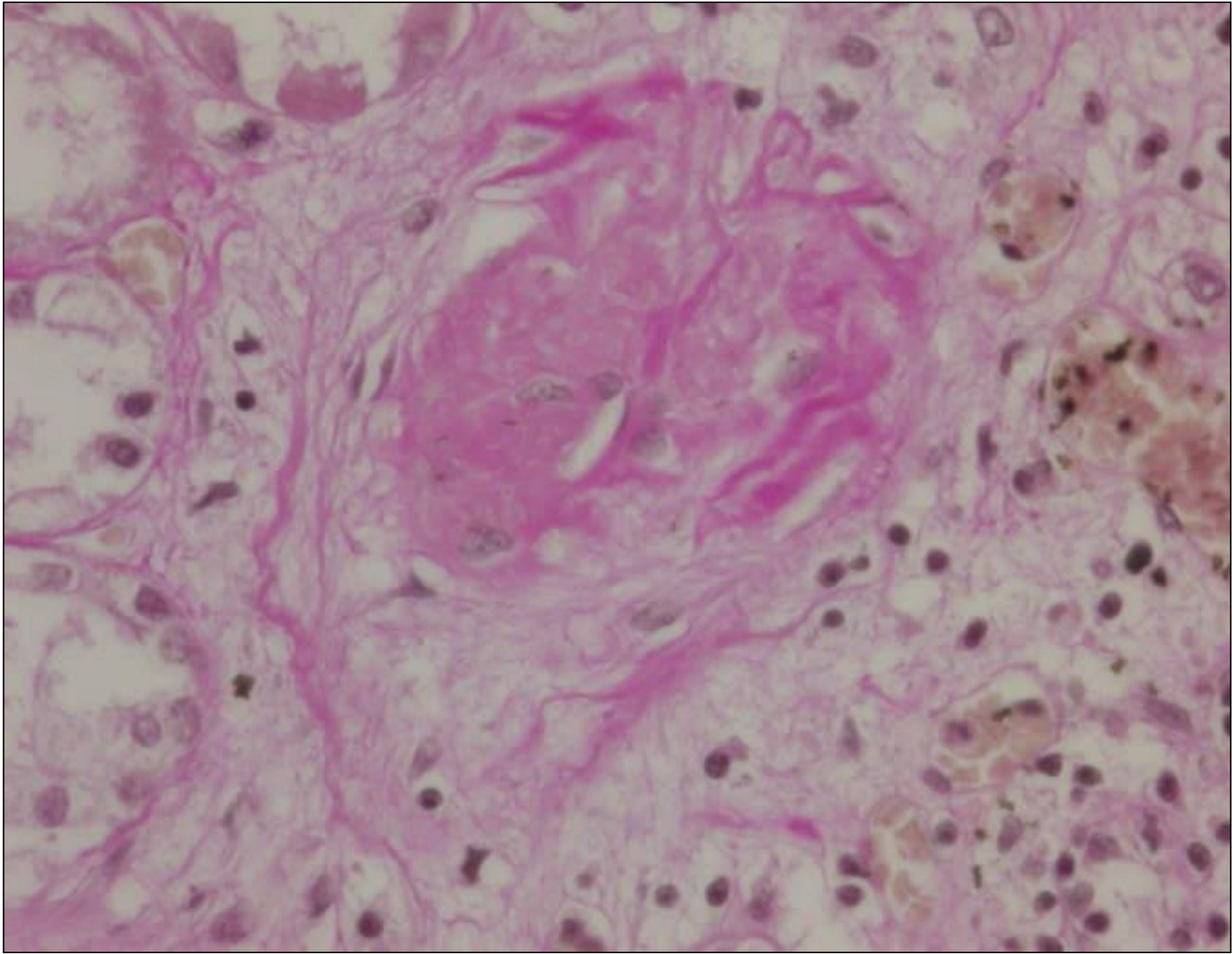


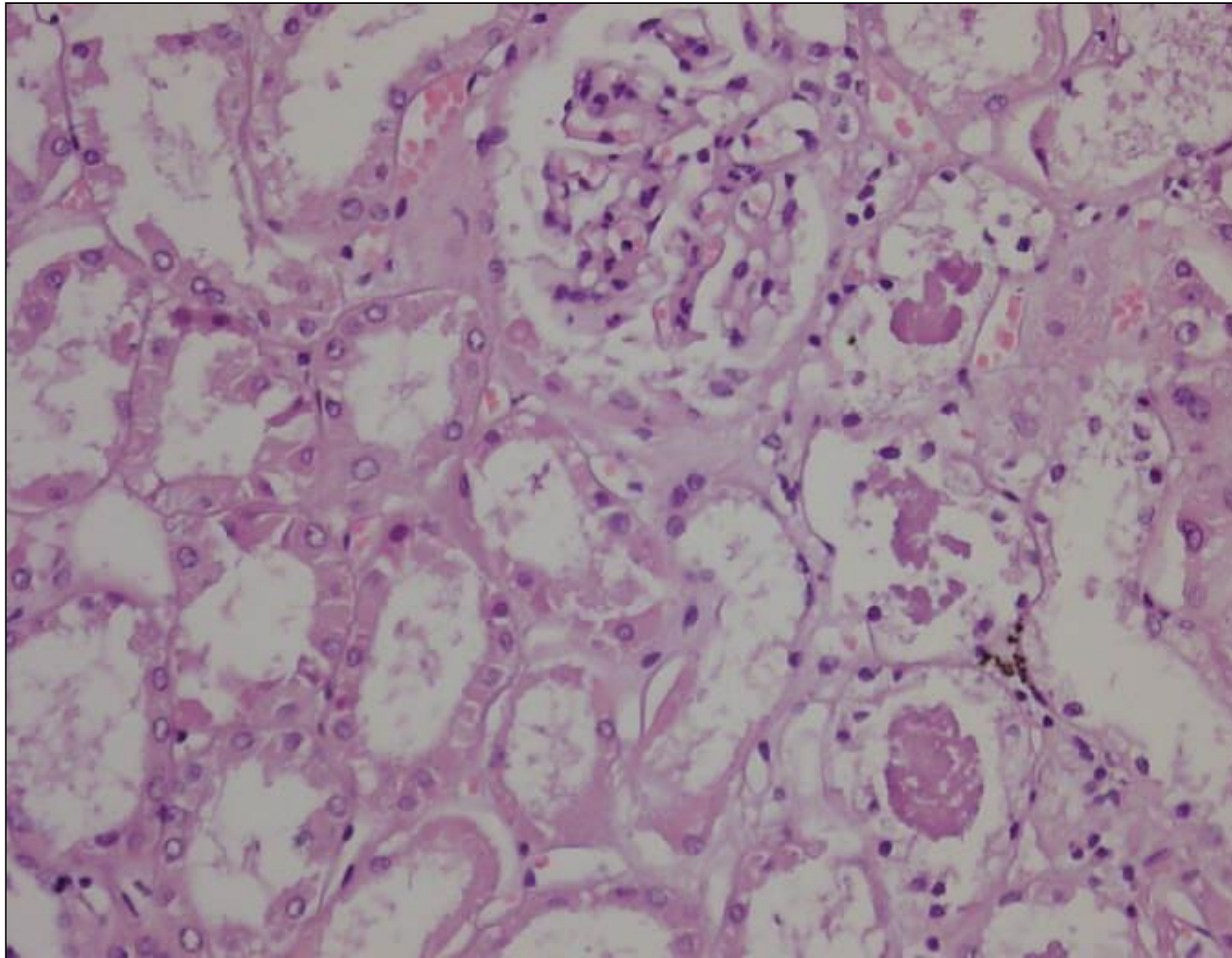


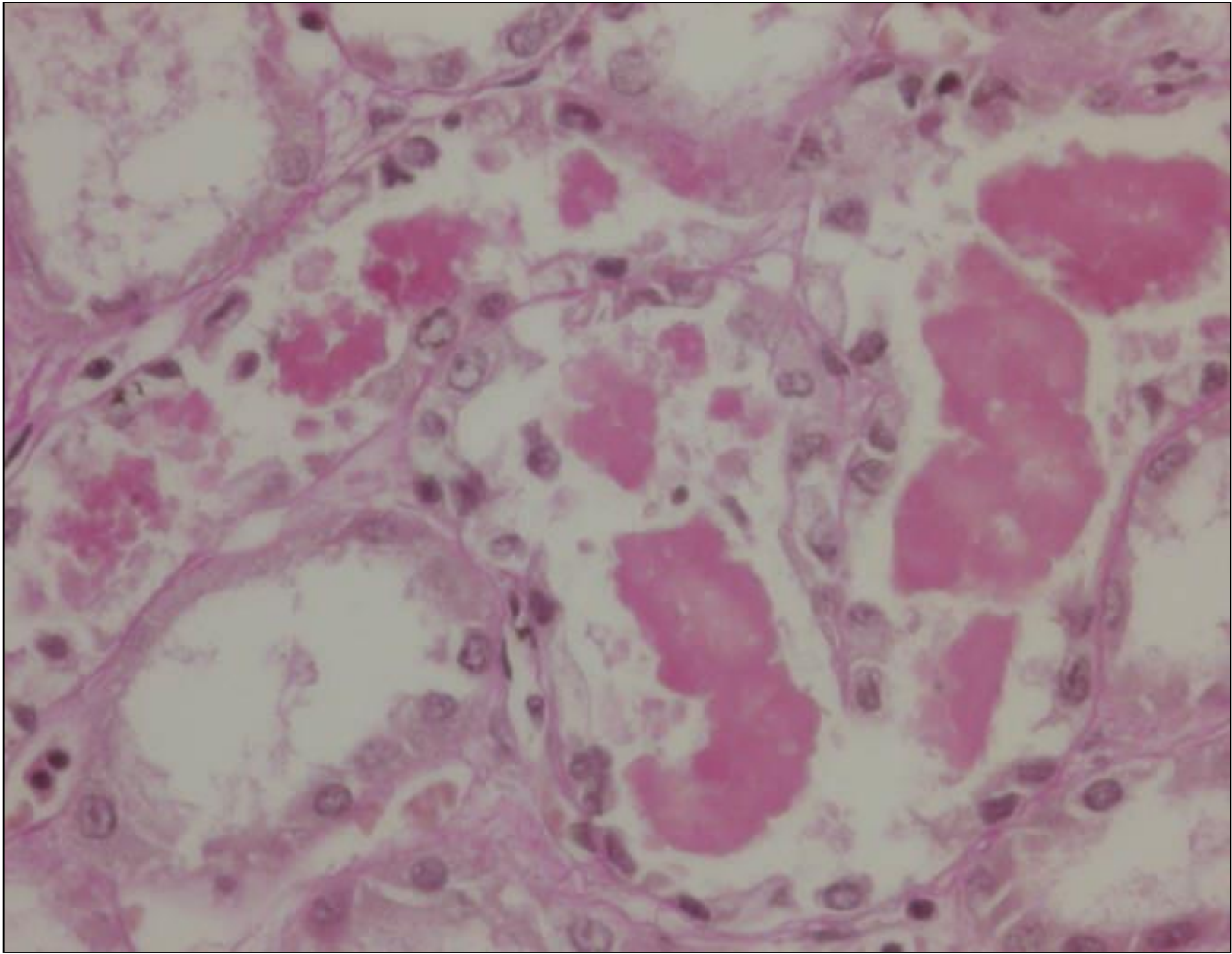


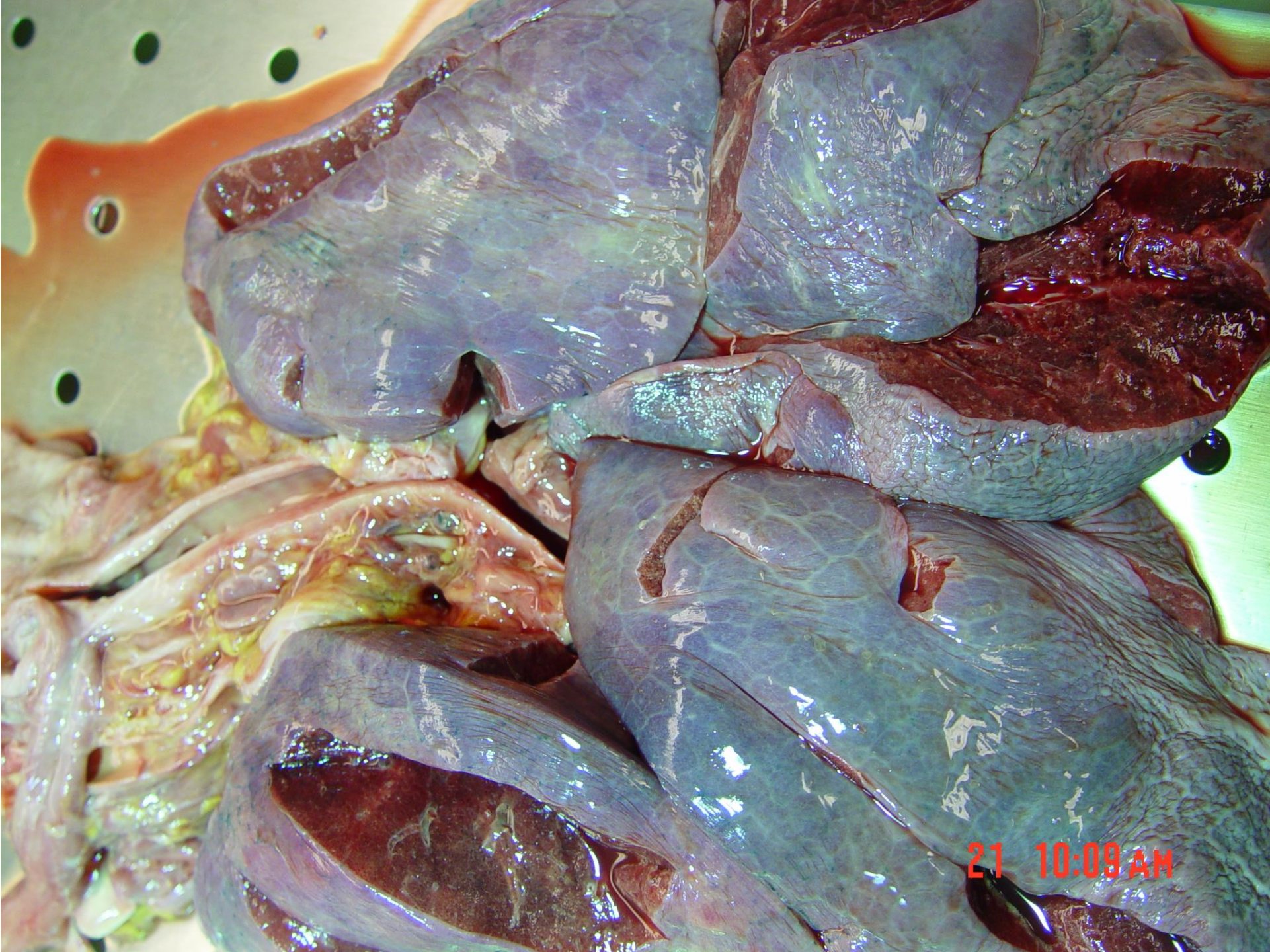




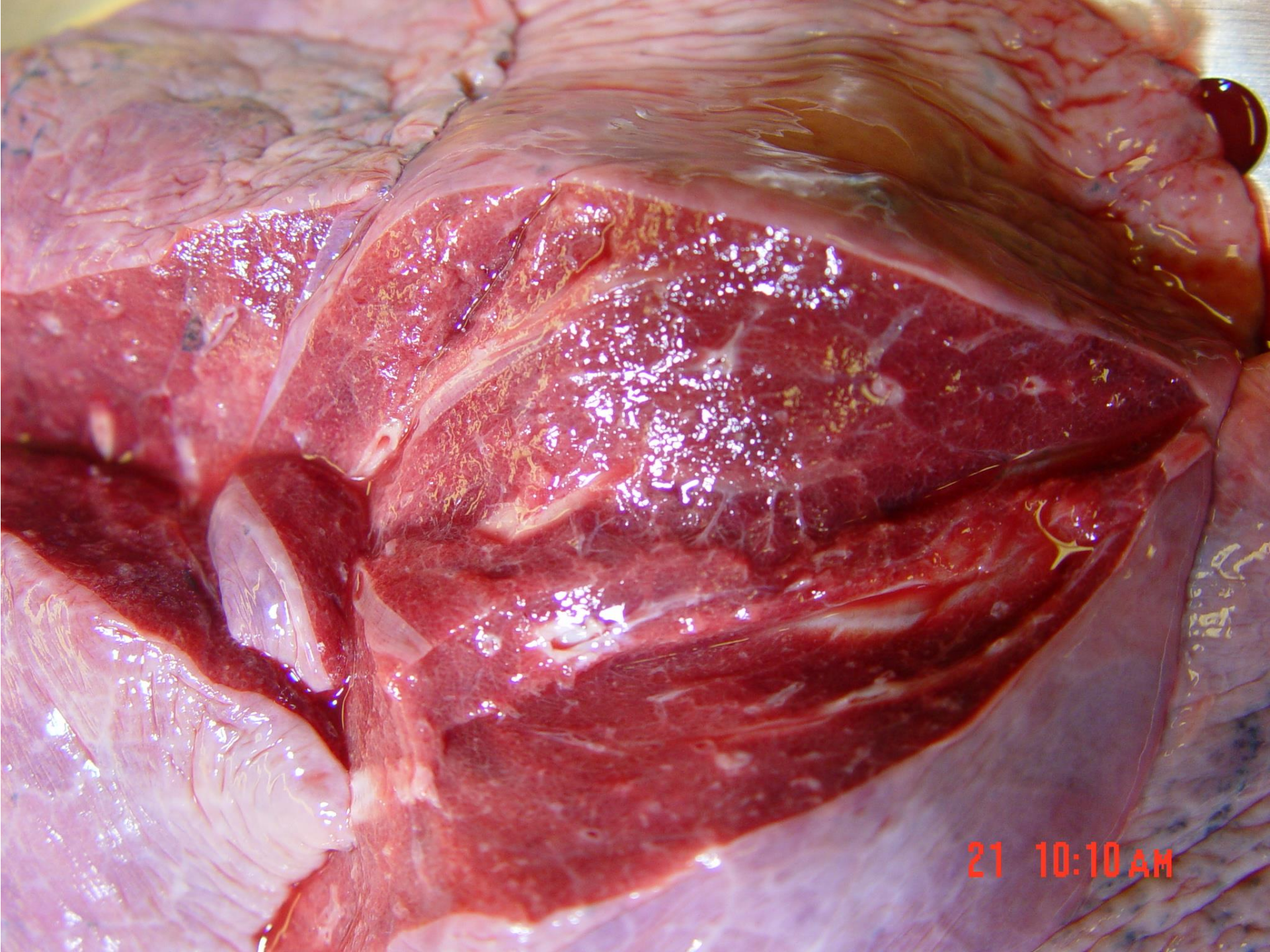




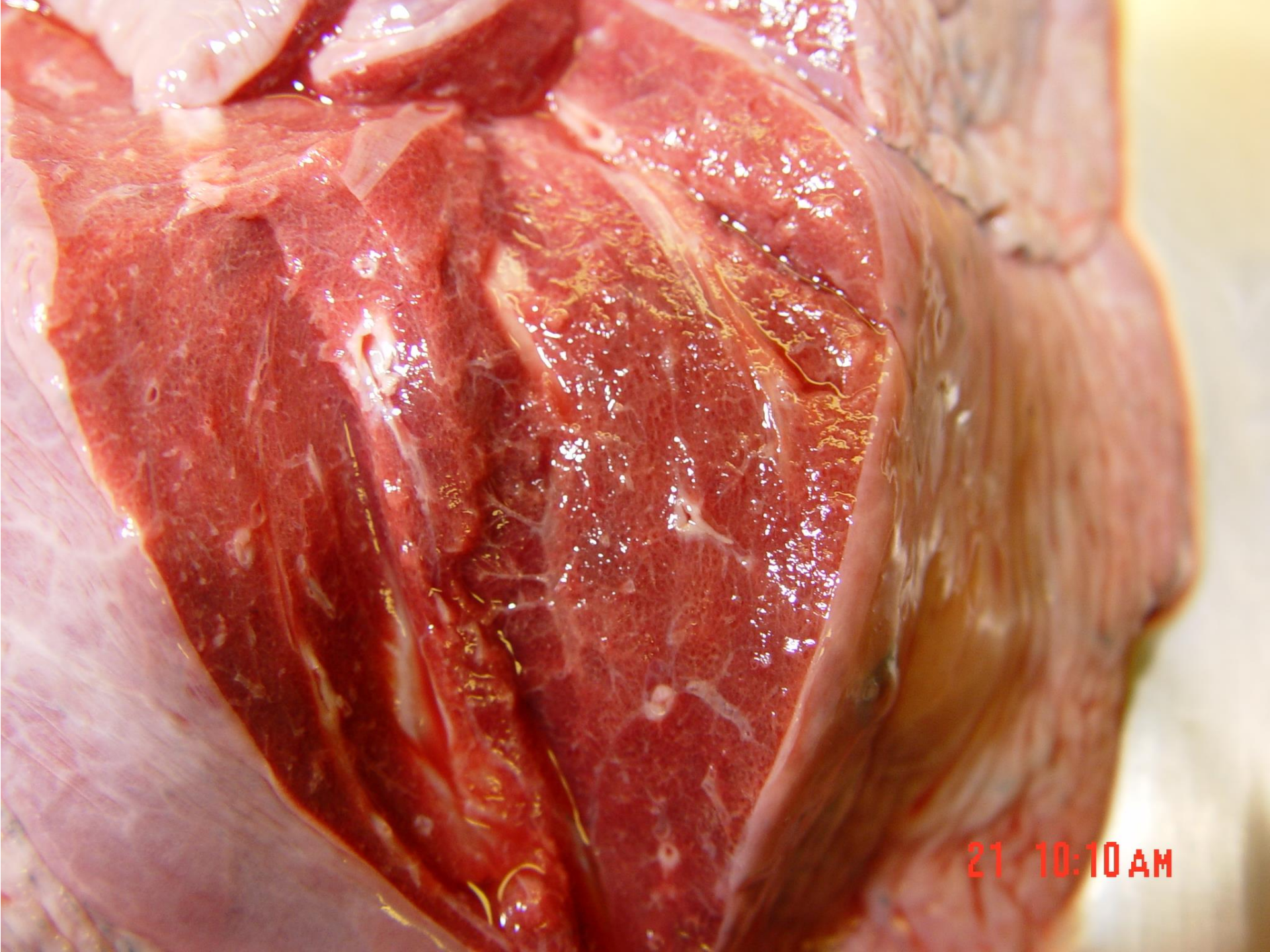




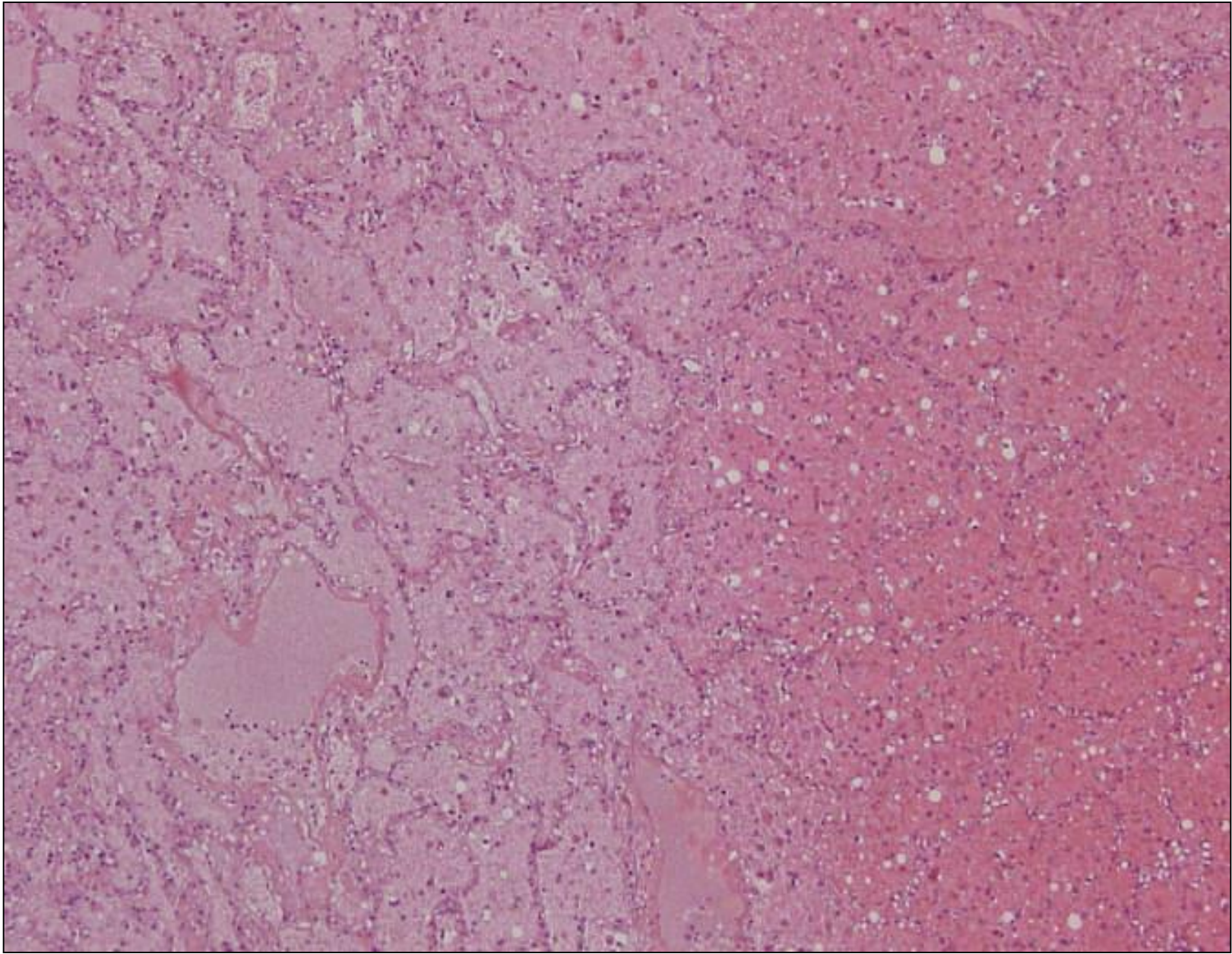
21 10:09 AM

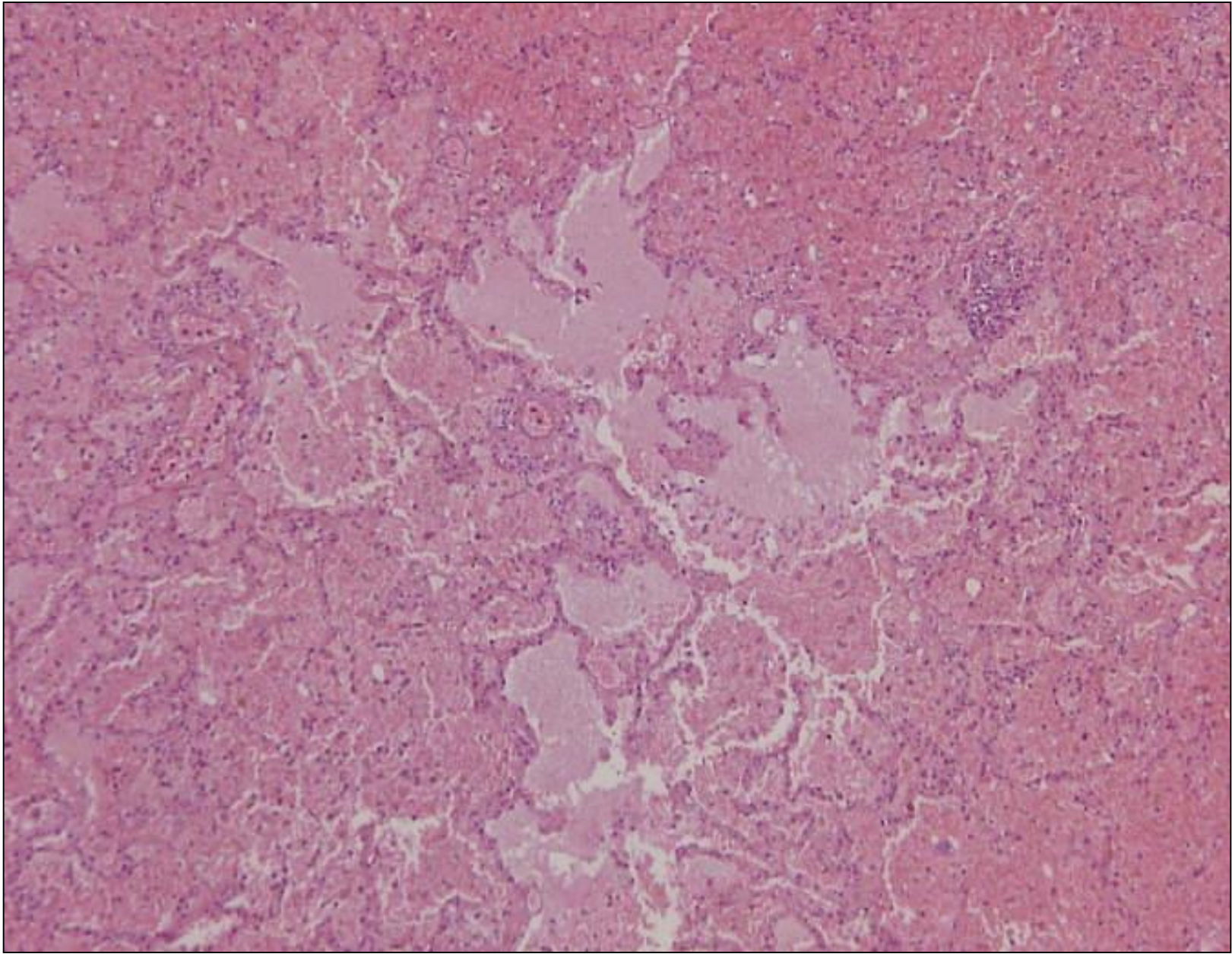


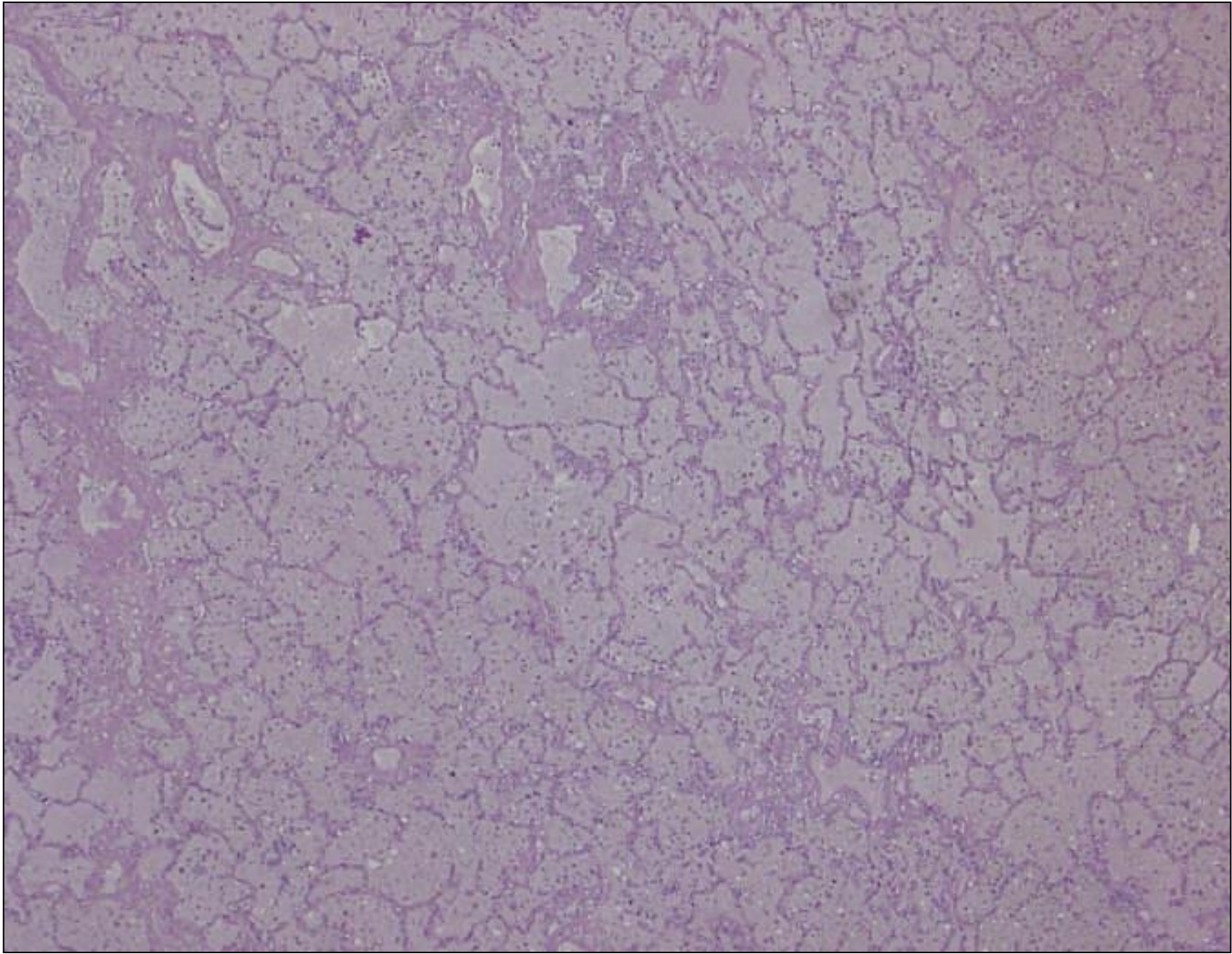
21 10:10 AM

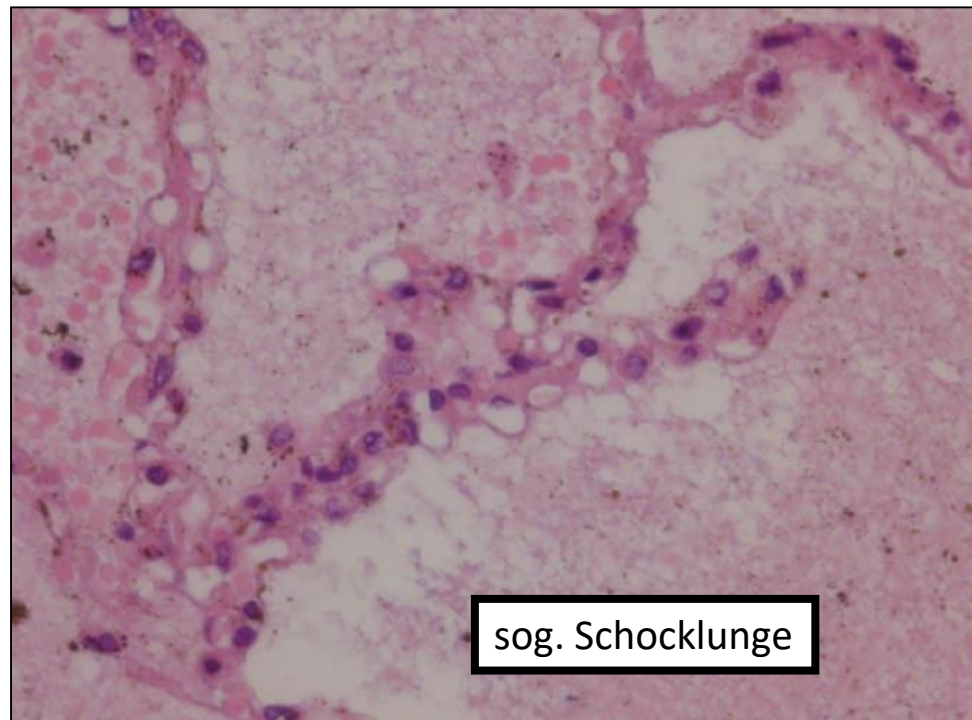
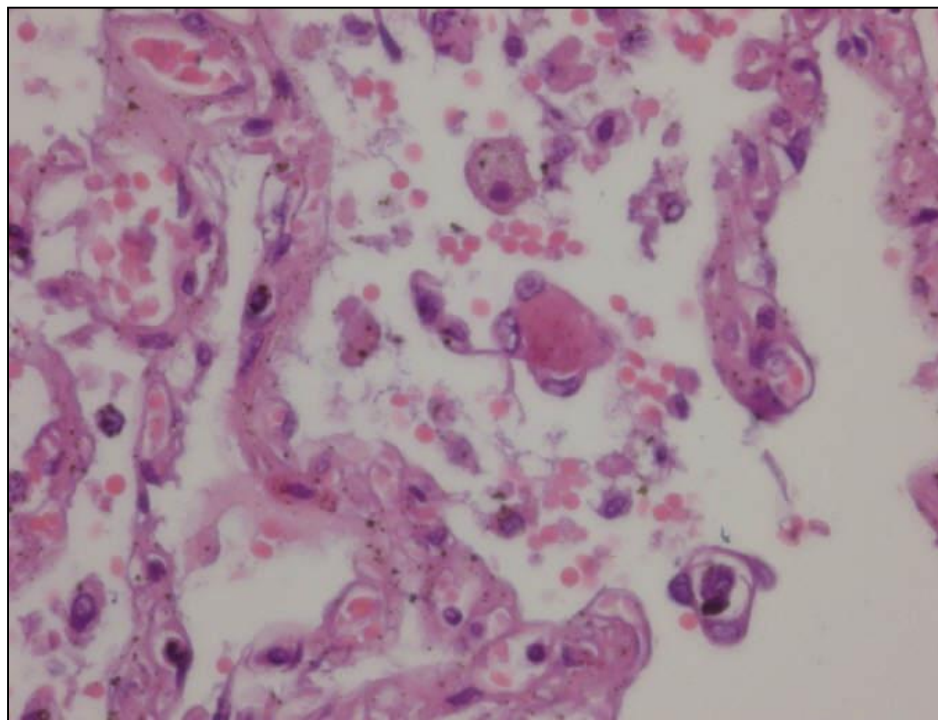
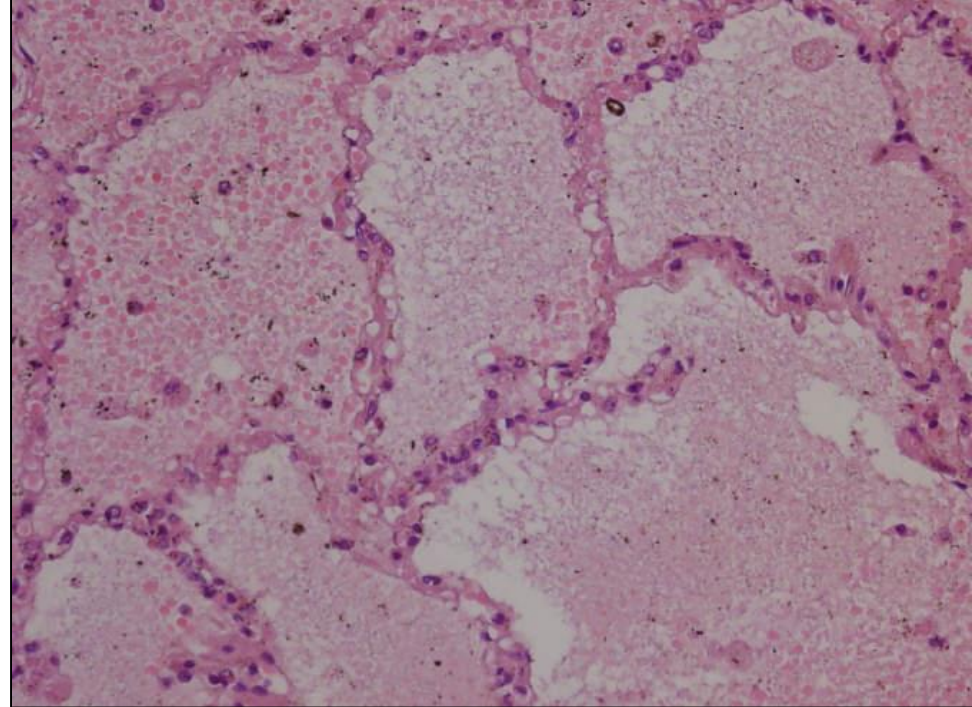
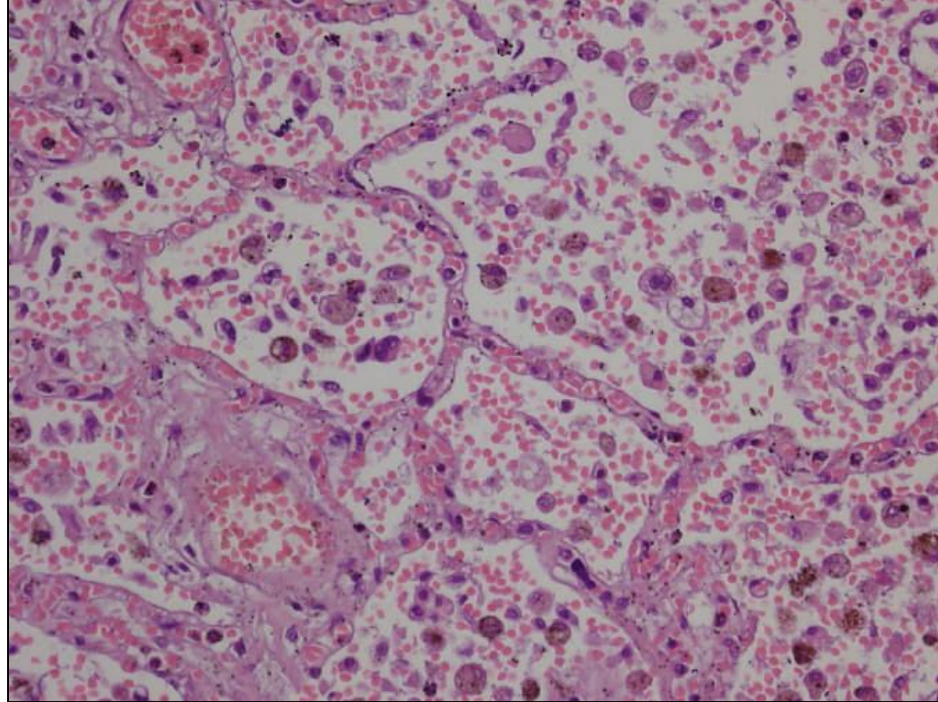


21 10:10 AM

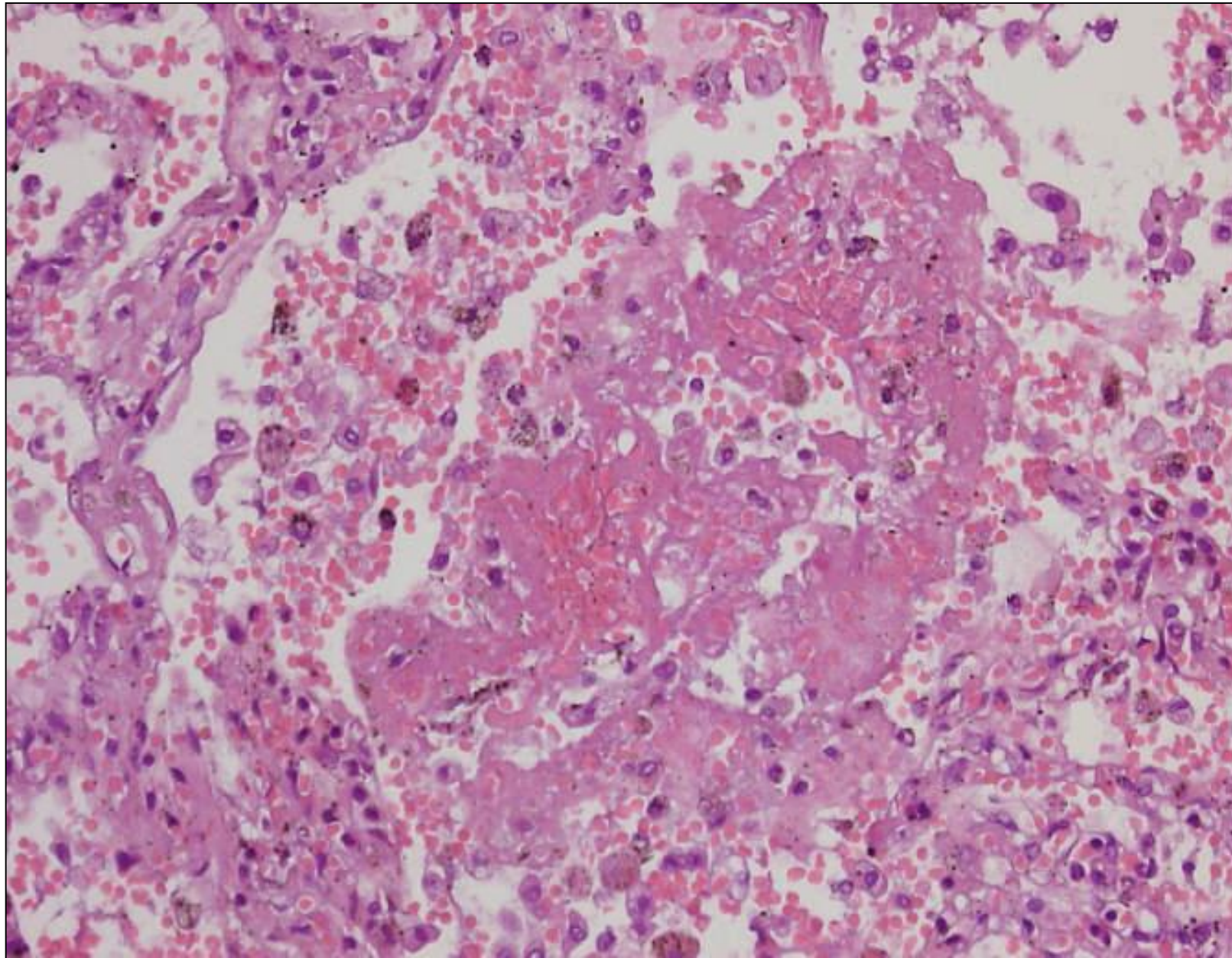


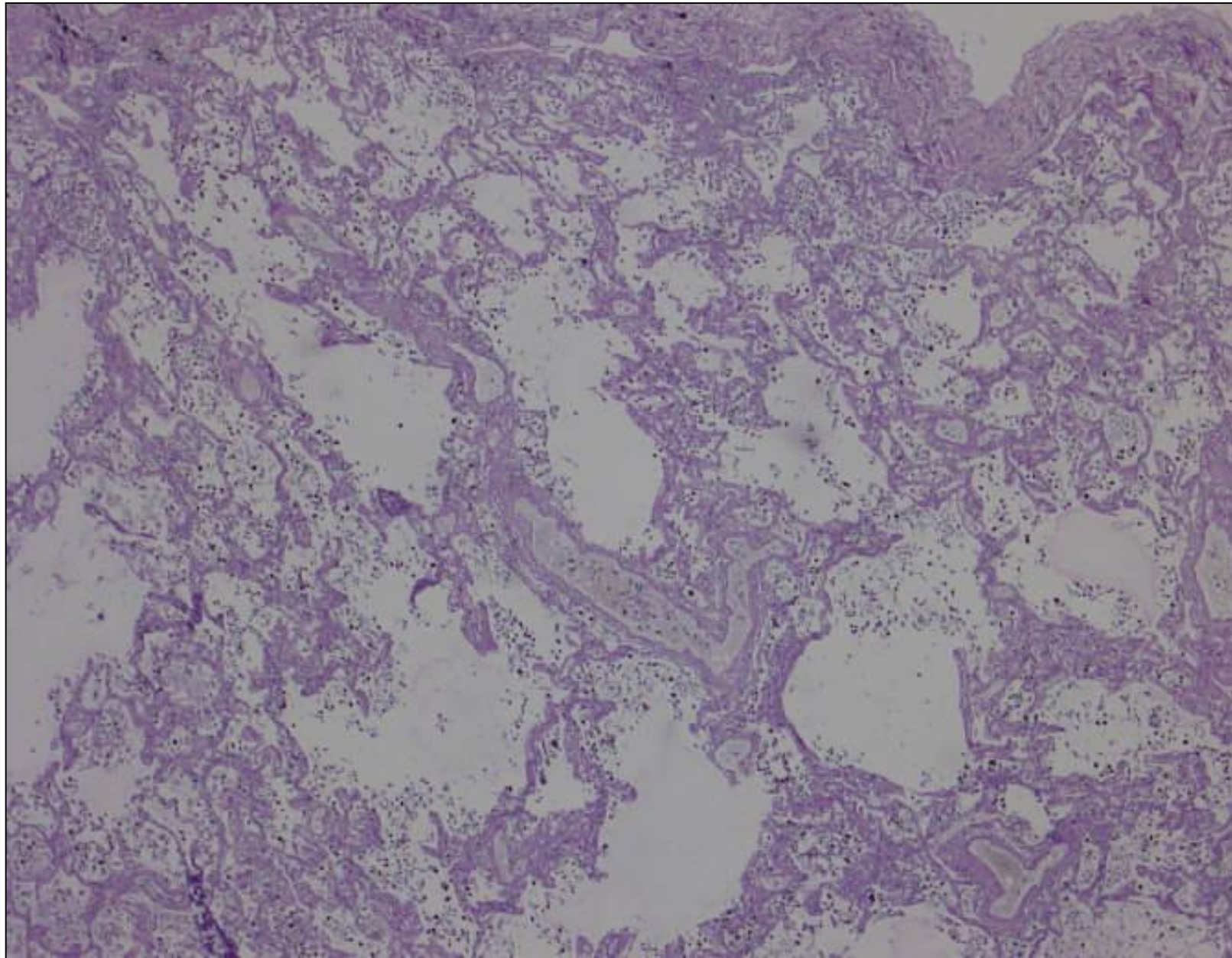


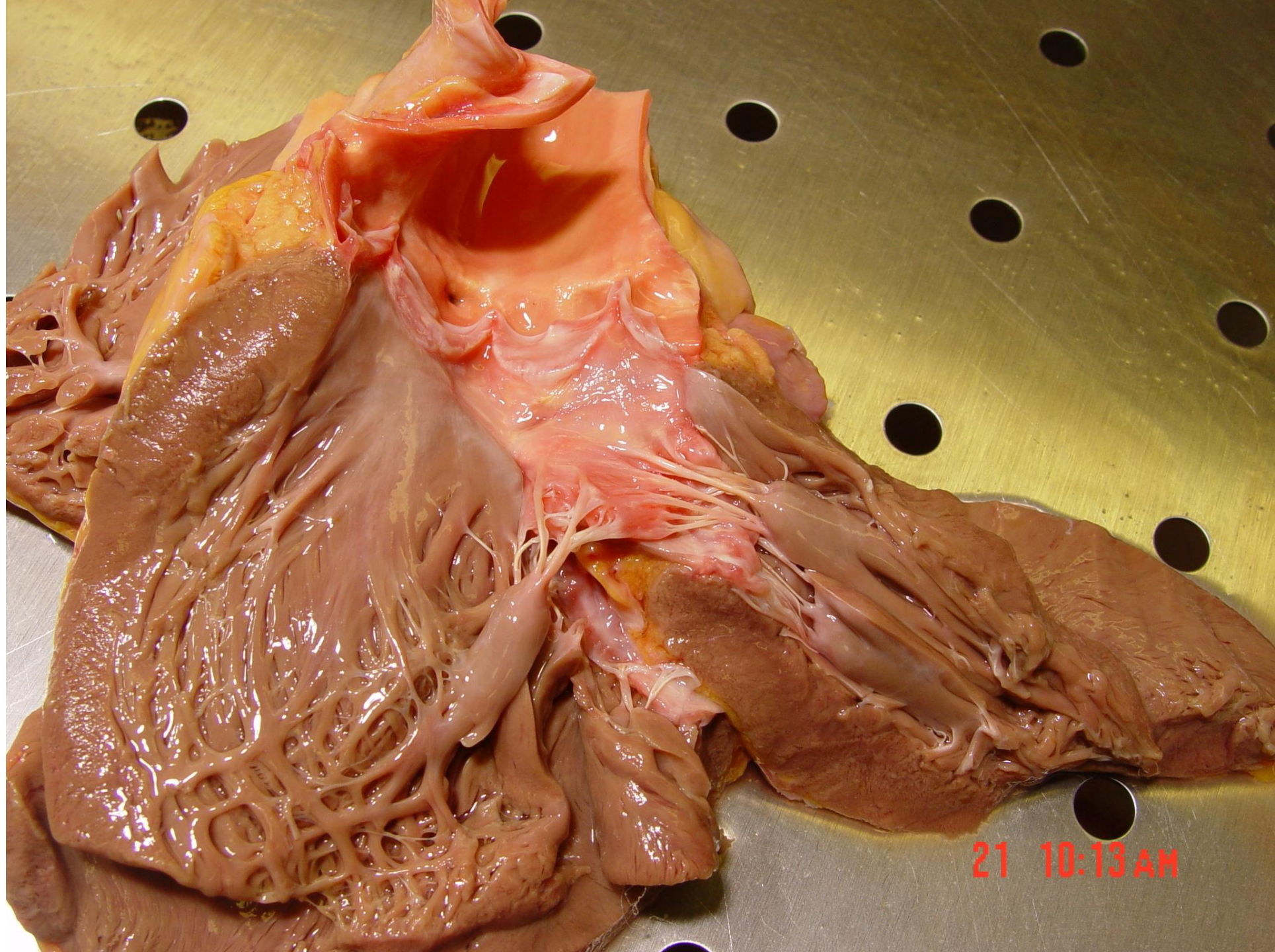


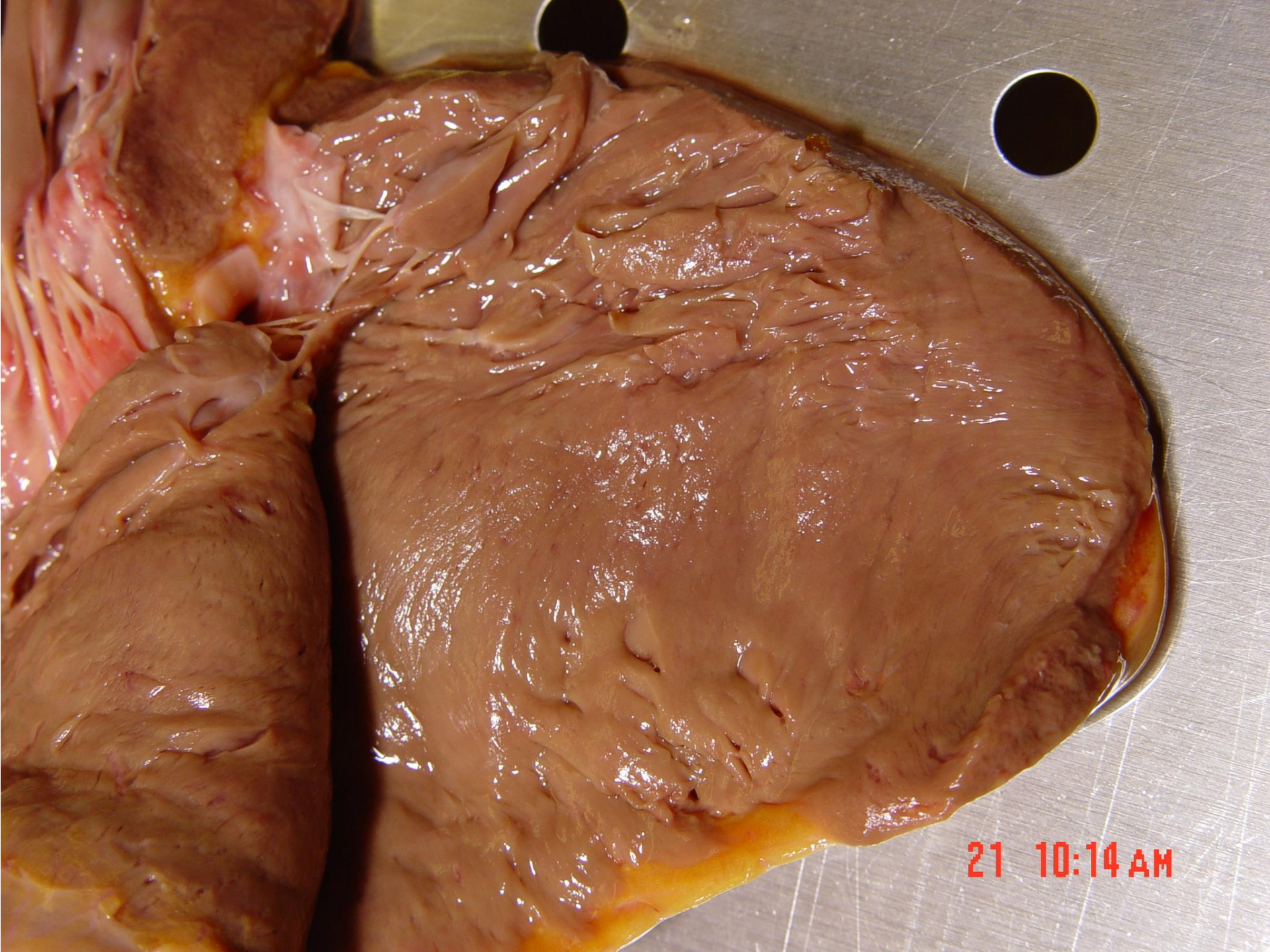


sog. Schocklunge

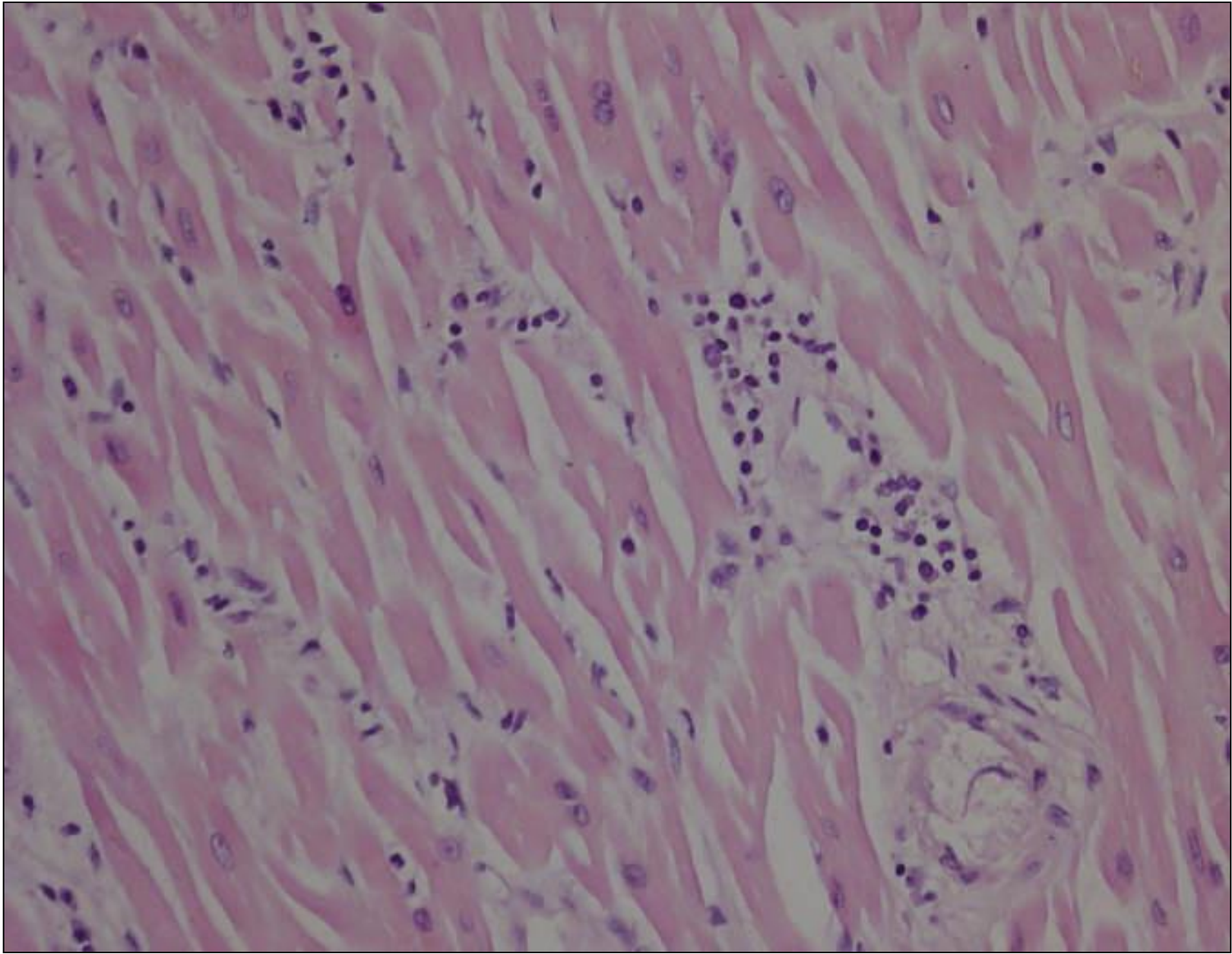


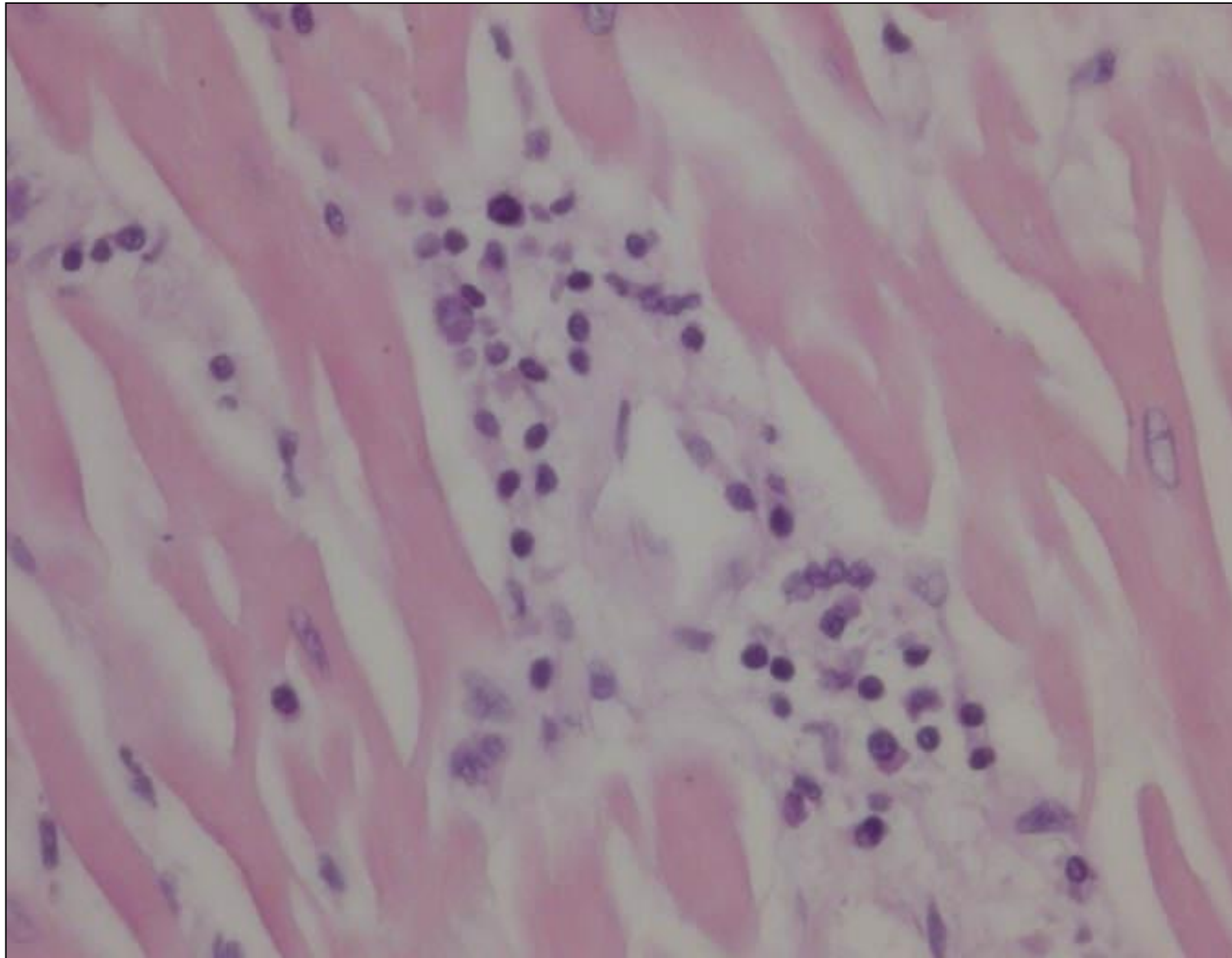


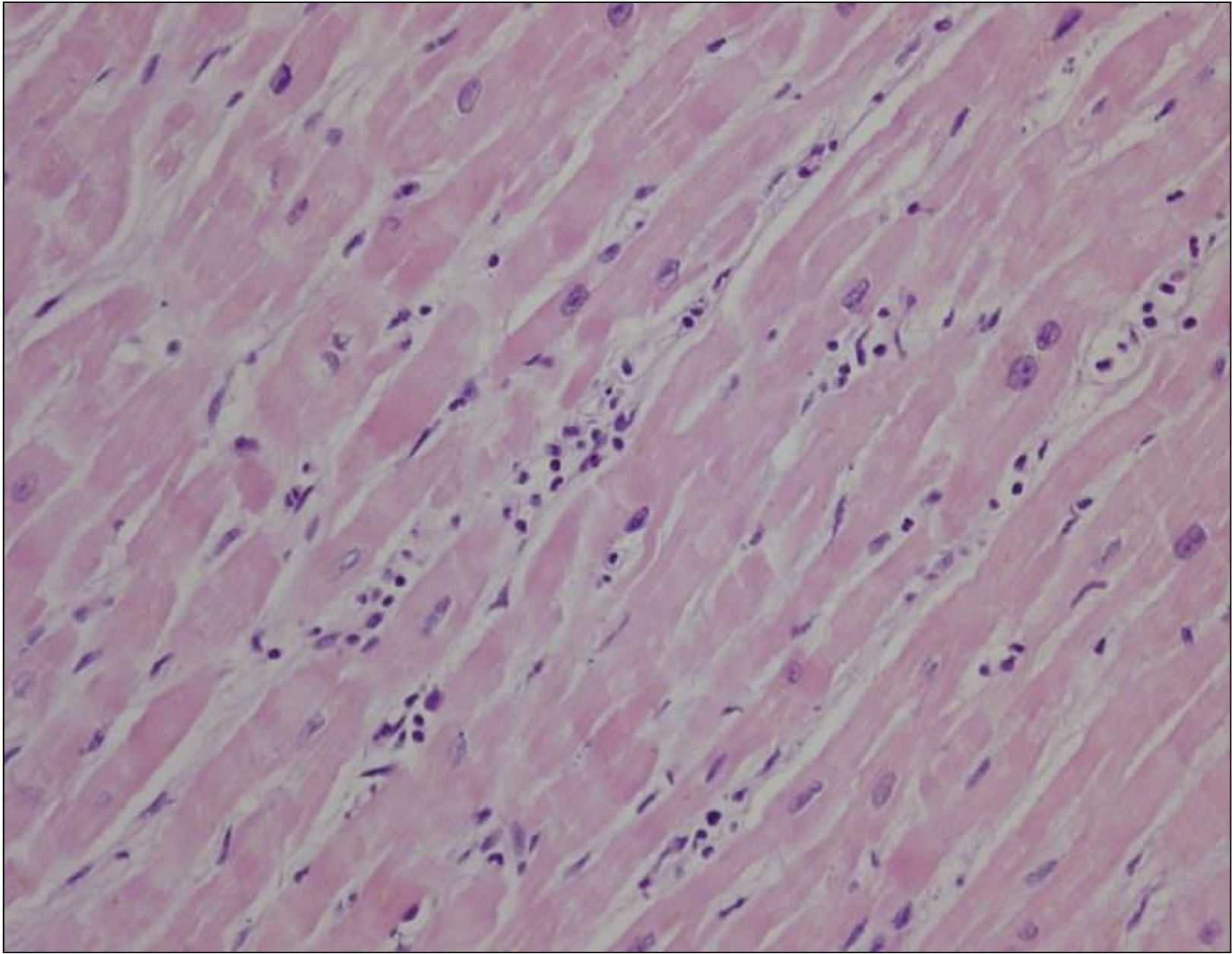


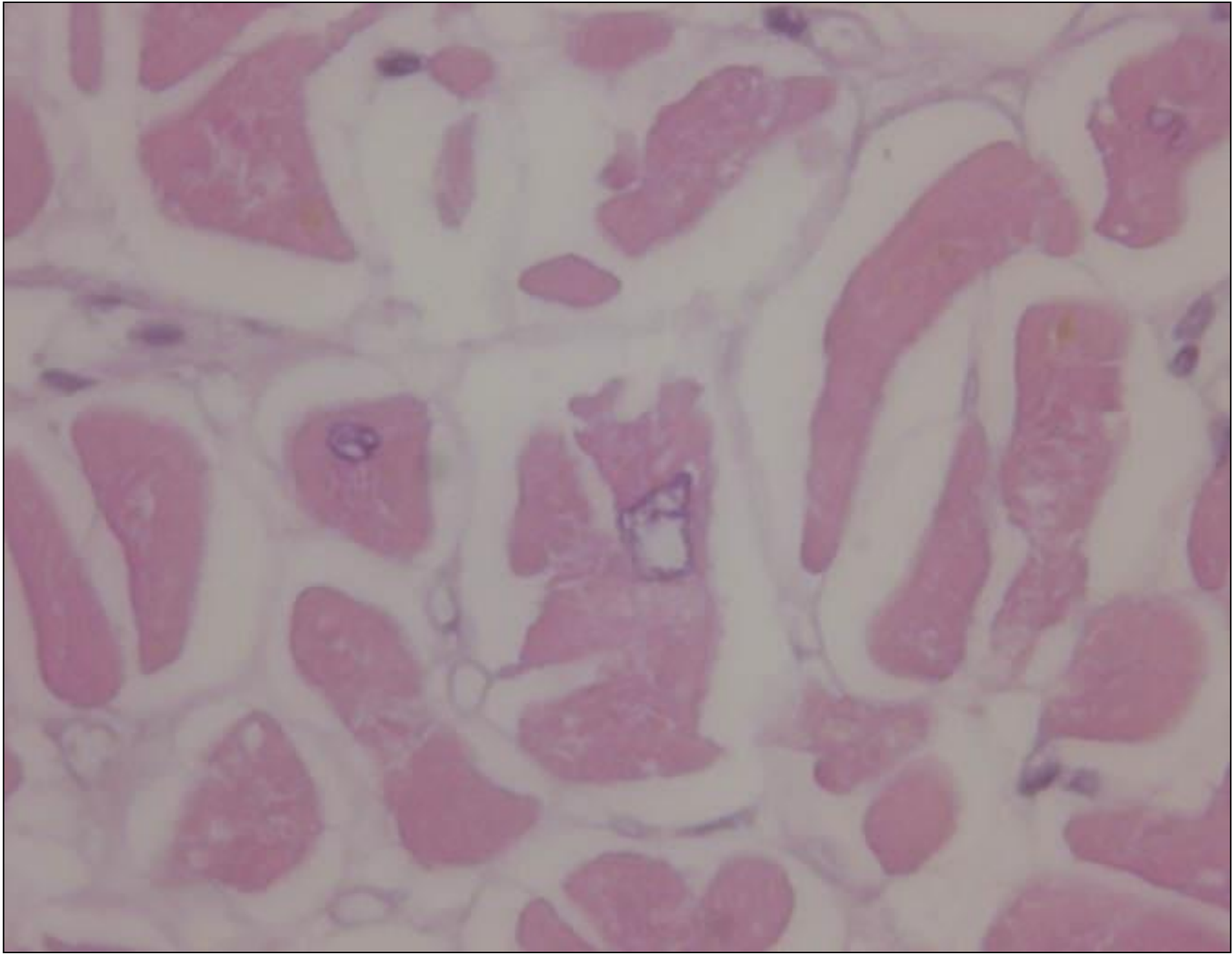


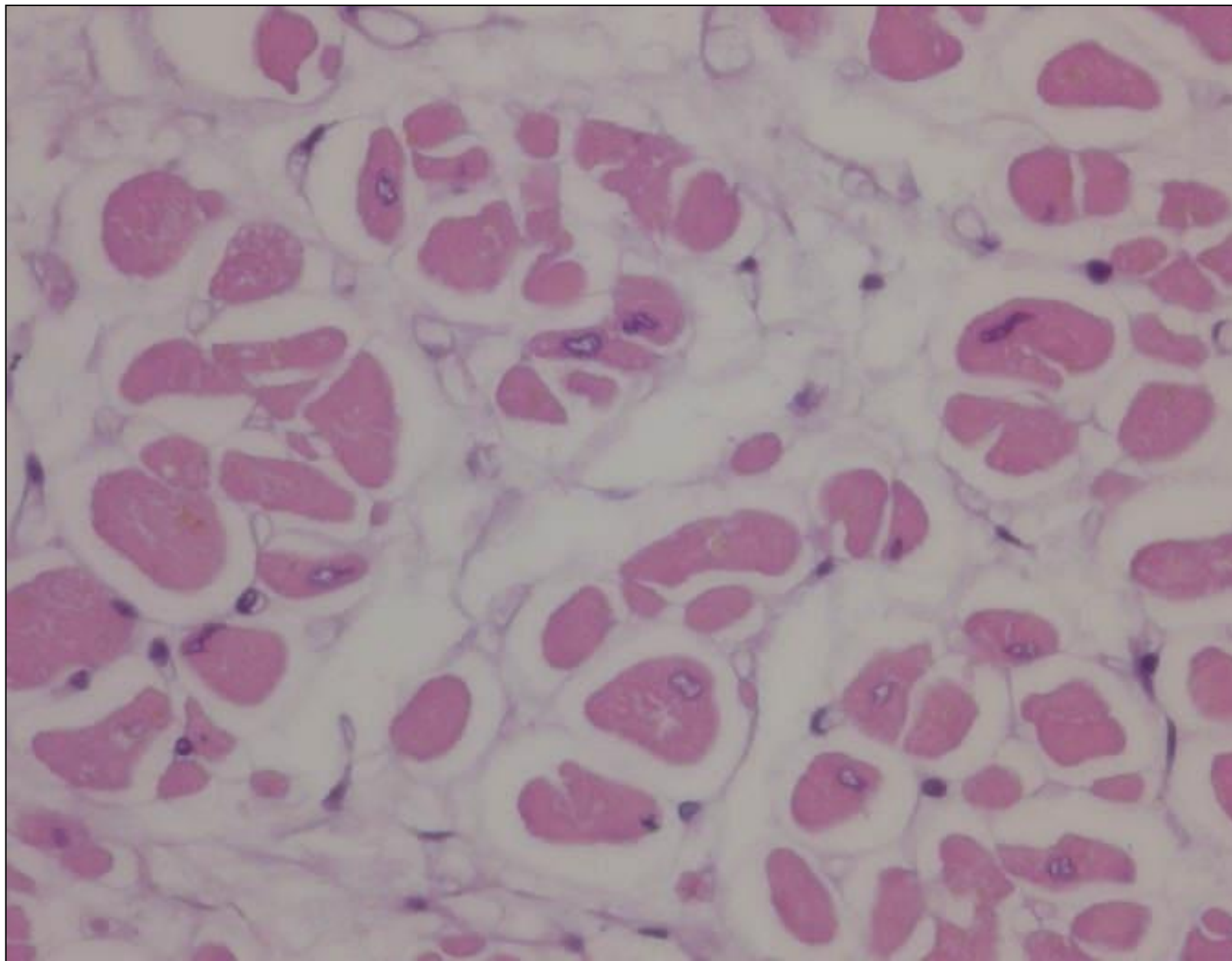
21 10:14 AM

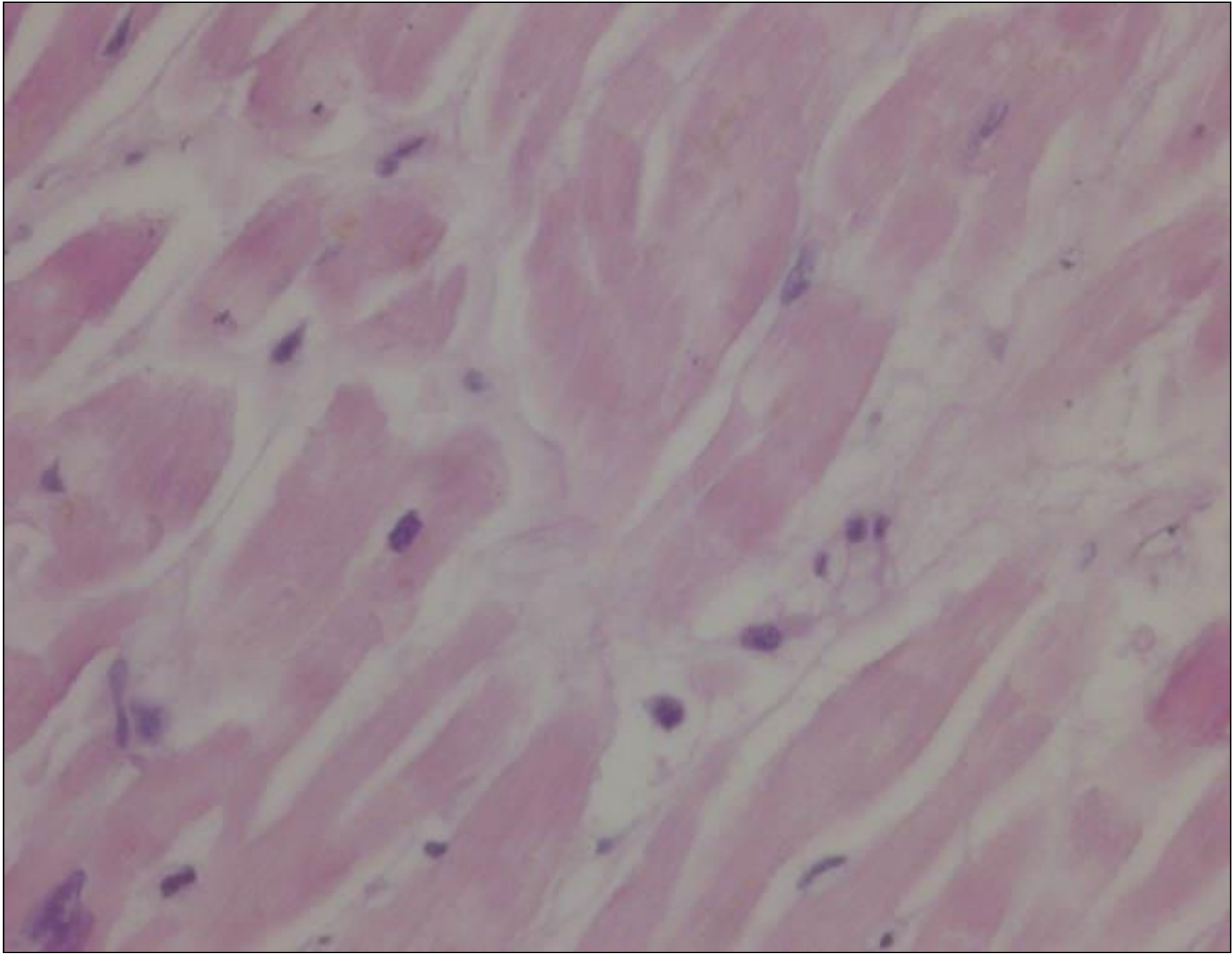


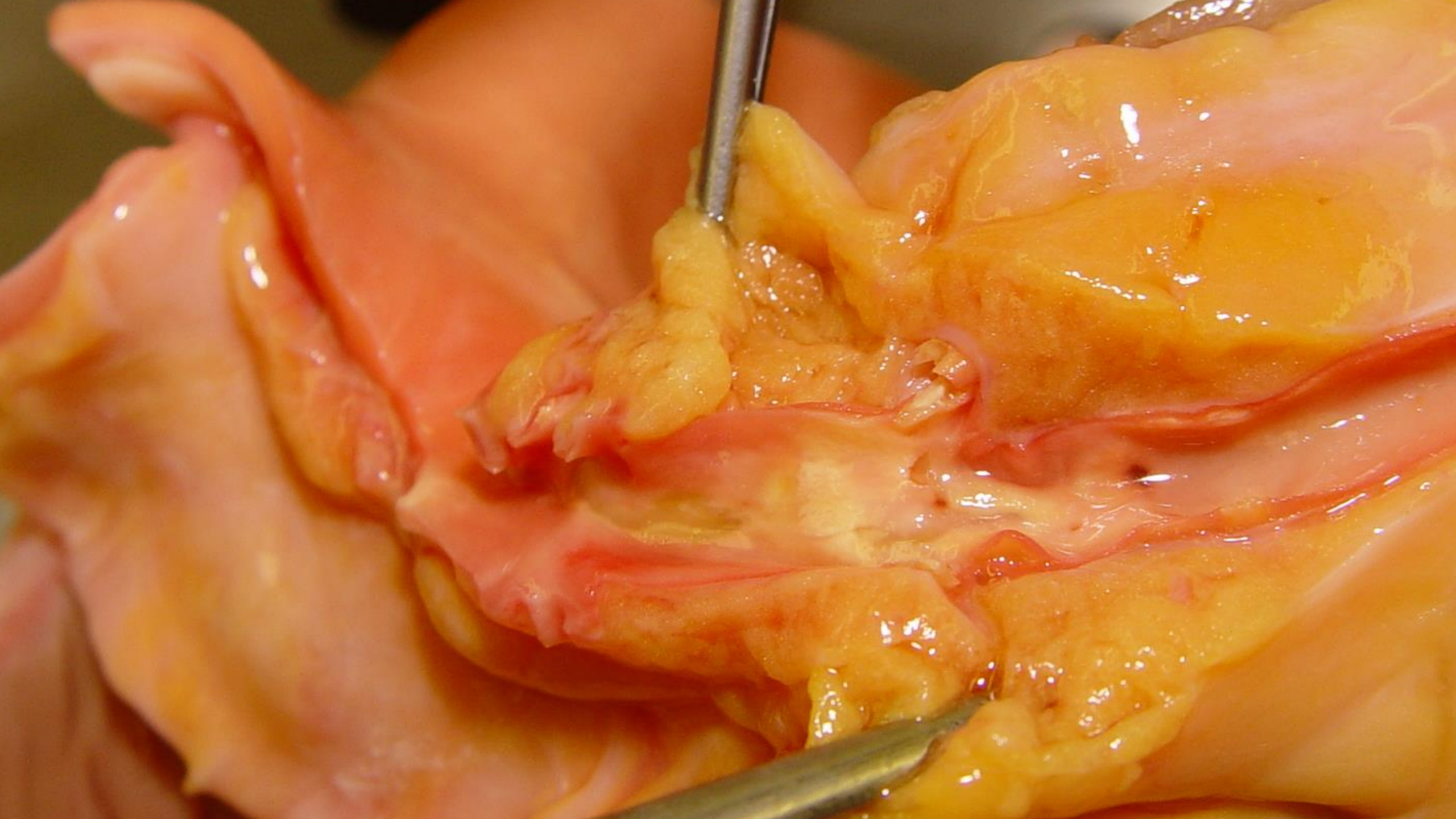


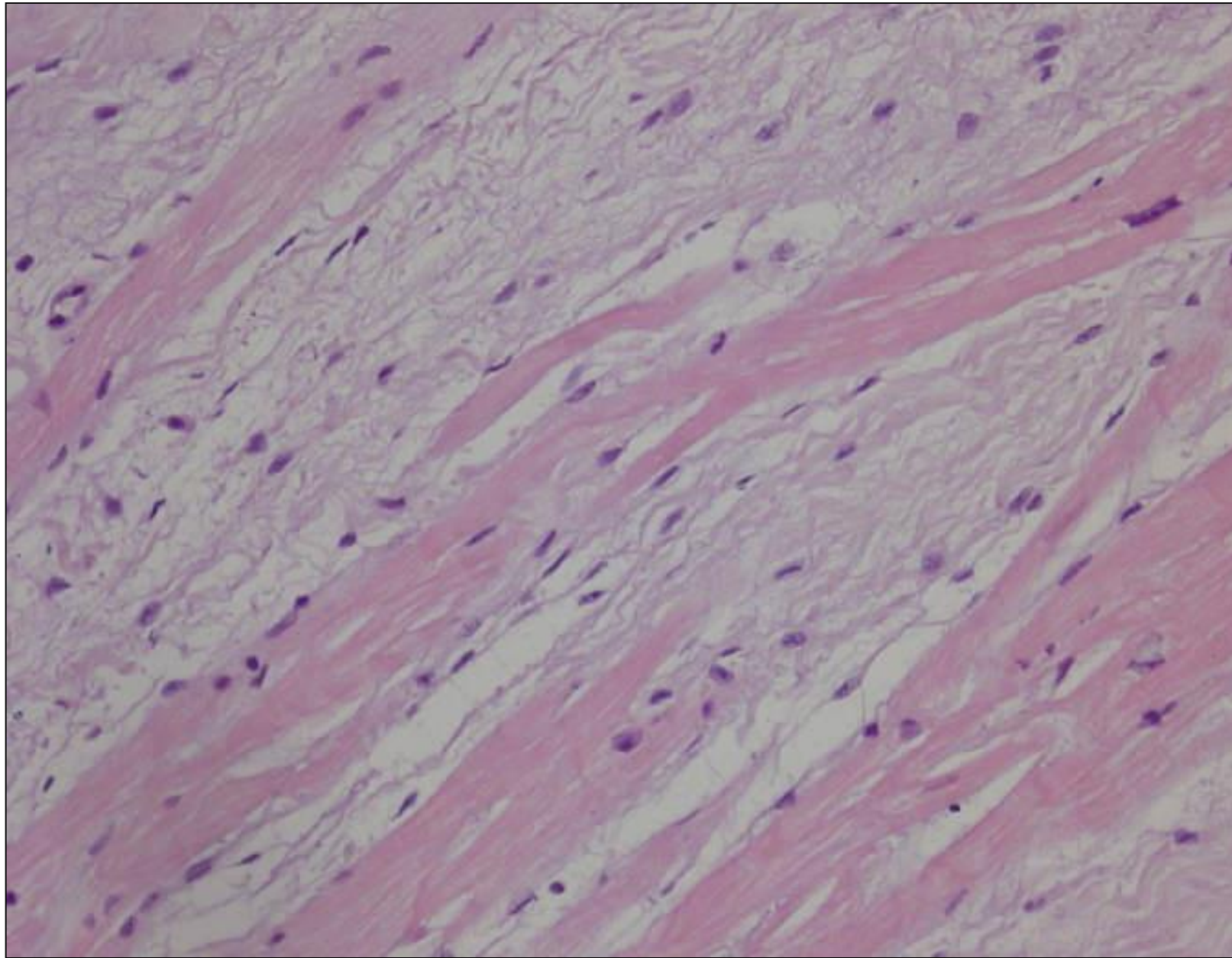














21 10:12 AM

